

December 5, 2011

Performance summary: November 2011

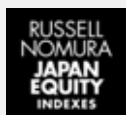


Fig. 1: Russell/Nomura Japan Equity Indexes performance summary

Total returns (including dividends, as of end-November 2011)

Index	No. of stocks	Weight (%)	Index value	Returns (%) *				
				1 month	3 months	6 months	12 months	YTD
Total Market	1,383	100.00	237.46	-4.61	-4.46	-11.98	-13.18	-16.90
Value	1,068	49.98	520.12	-4.92	-5.15	-12.04	-15.08	-19.10
Growth	582	50.02	97.15	-4.31	-3.75	-11.93	-11.20	-14.58
Large	298	83.02	227.61	-4.95	-4.59	-13.18	-15.20	-18.57
Large Value	190	38.11	484.37	-5.59	-5.65	-13.93	-18.50	-21.96
Large Growth	198	44.91	101.37	-4.41	-3.68	-12.54	-12.19	-15.46
Top	60	48.85	185.27	-5.15	-4.47	-14.56	-17.04	-20.38
Top Value	38	21.75	427.02	-5.87	-5.73	-15.52	-20.98	-24.20
Top Growth	45	27.10	87.76	-4.57	-3.44	-13.78	-13.59	-17.02
Mid	238	34.18	315.32	-4.66	-4.76	-11.13	-12.42	-15.84
Mid Value	152	16.36	527.64	-5.21	-5.54	-11.71	-14.96	-18.78
Mid Growth	153	17.82	142.54	-4.15	-4.04	-10.59	-9.95	-12.96
Mid-Small	1,323	51.15	311.92	-4.09	-4.44	-9.37	-9.14	-13.28
Mid-Small Value	1,030	28.23	560.82	-4.17	-4.70	-9.15	-9.89	-14.68
Mid-Small Growth	537	22.92	126.45	-3.99	-4.11	-9.64	-8.19	-11.50
Small	1,085	16.98	298.45	-2.92	-3.78	-5.62	-1.78	-7.66
Small Value	878	11.87	580.39	-2.70	-3.52	-5.37	-1.90	-8.35
Small Growth	384	5.11	101.08	-3.43	-4.38	-6.20	-1.53	-6.03
Small Core	347	11.19	98.34	-2.90	-3.09	-5.58	-2.03	-7.49
Small Core Value	271	7.41	146.92	-2.46	-2.51	-5.17	-2.92	-8.95
Small Core Growth	155	3.78	36.41	-3.73	-4.21	-6.36	-0.25	-4.52
Micro	738	5.79	110.71	-2.96	-5.07	-5.70	-1.31	-7.98
Micro Value	607	4.46	147.18	-3.09	-5.14	-5.70	-0.18	-7.34
Micro Growth	229	1.33	41.35	-2.55	-4.85	-5.71	-4.95	-10.05
Prime	989	97.95	666.87	-4.65	-4.44	-12.09	-13.42	-17.10
Prime Value	740	48.37	854.12	-4.99	-5.14	-12.21	-15.54	-19.49
Prime Growth	472	49.58	487.80	-4.32	-3.75	-11.98	-11.26	-14.63

Note: * Returns are not annualized.

Source: Nomura

Research analysts

Equity Quantitative Strategy

Akihiro Tokuno - NSC
idx_mgr@frc.nomura.co.jp
+81 3 6703 3986

Yumiko Hirano - NSC
idx_mgr@frc.nomura.co.jp
+81 3 6703 3986

Nana Komiyama - NSC
idx_mgr@frc.nomura.co.jp
+81 3 6703 3986

*Original Japanese was published on December 1, 2011

See Appendix A-1 for analyst certification, important disclosures and the status of non-US analysts.

What are the Russell/Nomura Japan Equity Indexes?

The Russell/Nomura Japan Equity Indexes are Japanese equity indexes developed jointly by US-based Russell Investments and the Quantitative Research Center, Nomura Securities Co., Ltd.

Russell/Nomura Japan Equity Indexes have the following characteristics:

- They represent the entire Japanese equity market in that component stocks are selected from among all listed stocks.
- They reflect the stocks that are actually available for investment, as stable shareholdings are excluded from market capitalization figures.
- There are sub-indexes for different sizes of company based on market capitalization.
- There are sub-indexes for growth and value stocks. Sub-indexes for growth and value stocks are based on P/B ratios adjusted for unrealized gains/losses on marketable securities and unrecognized retirement benefit obligations.
- The Prime Index consists of the top 1,000 stocks in the Total Market Index by market cap excluding stable shareholdings.
- Clear definitions mean that there is no arbitrariness in stock-selection methods.
- The composition of each index is reviewed once a year.

About Russell Investments

Founded in 1936, Russell Investments is a global financial services firm that serves institutional investors, financial advisers, and individuals in more than 35 countries. Over the course of its history, Russell's innovations have come to define many of the practices that are standard in the investment world today and have earned the company a reputation for excellence and leadership.

Through a unique combination of wide-ranging and interlinked businesses, Russell delivers financial products, services, and advice. It began its strategic pension fund consulting business in 1969 and today is utilized by many well-known worldwide institutions for investment advice. The firm has US\$110bn in assets under management (as of 30 September 2011) in its mutual funds, retirement products, and institutional funds, and is recognized for its depth of research and quality of manager selection. Russell offers a comprehensive range of implementation services that help institutional clients maximize their assets. The Russell Indexes calculate over 50,000 benchmarks daily covering 63 countries and more than 10,000 securities.

Russell is headquartered in Seattle, Washington, USA, with offices in Amsterdam, Auckland, Chicago, Johannesburg, London, Melbourne, New York, Paris, San Francisco, Seoul, Singapore, Sydney, Tokyo, and Toronto. For more information about how Russell helps to improve financial security for people, visit <http://www.russell.com>.

Russell/Nomura Japan Equity Indexes are protected by certain intellectual property rights of Nomura Securities Co., Ltd. and Russell Investments. Nomura Securities Co., Ltd. and Russell Investments do not guarantee the accuracy, completeness, reliability, or usefulness thereof and do not account for business activities and services that any index user and its affiliates undertake with the use of the Indexes.

Fig. 2: Russell/Nomura Japan Equity Indexes performance summary

Price returns (excluding dividends, as of end-November 2011)

Index	No. of stocks	Weight (%)	Index value	Returns (%) *				
				1 month	3 months	6 months	12 months	YTD
Total Market	1,383	100.00	163.92	-4.61	-5.39	-12.95	-15.17	-18.75
Value	1,068	49.98	345.51	-4.91	-6.16	-13.03	-17.13	-21.03
Growth	582	50.02	69.70	-4.31	-4.62	-12.87	-13.12	-16.34
Large	298	83.02	156.92	-4.95	-5.58	-14.19	-17.19	-20.43
Large Value	190	38.11	321.75	-5.58	-6.73	-14.97	-20.54	-23.89
Large Growth	198	44.91	72.38	-4.40	-4.58	-13.51	-14.13	-17.24
Top	60	48.85	125.89	-5.15	-5.63	-15.71	-19.21	-22.40
Top Value	38	21.75	281.96	-5.87	-7.00	-16.73	-23.20	-26.31
Top Growth	45	27.10	61.08	-4.57	-4.50	-14.88	-15.71	-18.96
Mid	238	34.18	221.09	-4.65	-5.51	-11.92	-14.14	-17.44
Mid Value	152	16.36	353.78	-5.20	-6.37	-12.53	-16.72	-20.44
Mid Growth	153	17.82	105.32	-4.15	-4.69	-11.35	-11.62	-14.49
Mid-Small	1,323	51.15	217.71	-4.09	-5.17	-10.16	-10.95	-14.94
Mid-Small Value	1,030	28.23	374.80	-4.16	-5.49	-9.97	-11.79	-16.44
Mid-Small Growth	537	22.92	93.44	-4.00	-4.76	-10.39	-9.87	-13.03
Small	1,085	16.98	205.73	-2.93	-4.47	-6.41	-3.80	-9.47
Small Value	878	11.87	385.09	-2.70	-4.25	-6.20	-4.02	-10.26
Small Growth	384	5.11	74.69	-3.47	-4.98	-6.91	-3.29	-7.61
Small Core	347	11.19	83.38	-2.90	-3.81	-6.36	-4.00	-9.28
Small Core Value	271	7.41	122.85	-2.46	-3.26	-5.98	-4.97	-10.80
Small Core Growth	155	3.78	31.89	-3.77	-4.86	-7.11	-2.08	-6.17
Micro	738	5.79	92.63	-2.99	-5.73	-6.50	-3.42	-9.85
Micro Value	607	4.46	121.25	-3.10	-5.87	-6.56	-2.44	-9.35
Micro Growth	229	1.33	36.40	-2.61	-5.28	-6.31	-6.54	-11.46
Prime	989	97.95	551.35	-4.65	-5.38	-13.06	-15.41	-18.95
Prime Value	740	48.37	693.17	-4.98	-6.15	-13.20	-17.59	-21.41
Prime Growth	472	49.58	410.48	-4.33	-4.62	-12.93	-13.19	-16.39

Note: * Returns are not annualized.

Source: Nomura

Fig. 3: Russell/Nomura Japan Equity Indexes performance summary

Total returns (including dividends, as of end-November 2011)

Index	No. of stocks	Weight (%)	Index value	Returns (%) *				
				1 month	3 months	6 months	12 months	YTD
Total Market	1,383	100.00	237.46	-4.61	-4.46	-11.98	-13.18	-16.90
Value	1,068	49.98	520.12	-4.92	-5.15	-12.04	-15.08	-19.10
Growth	582	50.02	97.15	-4.31	-3.75	-11.93	-11.20	-14.58
Large	298	83.02	227.61	-4.95	-4.59	-13.18	-15.20	-18.57
Large Value	190	38.11	484.37	-5.59	-5.65	-13.93	-18.50	-21.96
Large Growth	198	44.91	101.37	-4.41	-3.68	-12.54	-12.19	-15.46
Top	60	48.85	185.27	-5.15	-4.47	-14.56	-17.04	-20.38
Top Value	38	21.75	427.02	-5.87	-5.73	-15.52	-20.98	-24.20
Top Growth	45	27.10	87.76	-4.57	-3.44	-13.78	-13.59	-17.02
Mid	238	34.18	315.32	-4.66	-4.76	-11.13	-12.42	-15.84
Mid Value	152	16.36	527.64	-5.21	-5.54	-11.71	-14.96	-18.78
Mid Growth	153	17.82	142.54	-4.15	-4.04	-10.59	-9.95	-12.96
Mid-Small	1,323	51.15	311.92	-4.09	-4.44	-9.37	-9.14	-13.28
Mid-Small Value	1,030	28.23	560.82	-4.17	-4.70	-9.15	-9.89	-14.68
Mid-Small Growth	537	22.92	126.45	-3.99	-4.11	-9.64	-8.19	-11.50
Small	1,085	16.98	298.45	-2.92	-3.78	-5.62	-1.78	-7.66
Small Value	878	11.87	580.39	-2.70	-3.52	-5.37	-1.90	-8.35
Small Growth	384	5.11	101.08	-3.43	-4.38	-6.20	-1.53	-6.03
Small Core	347	11.19	98.34	-2.90	-3.09	-5.58	-2.03	-7.49
Small Core Value	271	7.41	146.92	-2.46	-2.51	-5.17	-2.92	-8.95
Small Core Growth	155	3.78	36.41	-3.73	-4.21	-6.36	-0.25	-4.52
Micro	738	5.79	110.71	-2.96	-5.07	-5.70	-1.31	-7.98
Micro Value	607	4.46	147.18	-3.09	-5.14	-5.70	-0.18	-7.34
Micro Growth	229	1.33	41.35	-2.55	-4.85	-5.71	-4.95	-10.05
Prime	989	97.95	666.87	-4.65	-4.44	-12.09	-13.42	-17.10
Prime Value	740	48.37	854.12	-4.99	-5.14	-12.21	-15.54	-19.49
Prime Growth	472	49.58	487.80	-4.32	-3.75	-11.98	-11.26	-14.63

Note: * Returns are not annualized.

Source: Nomura

Fig. 4: Russell/Nomura index data by industrial sector

Number of stocks and weighting (as of end-November 2011)

	Index	Total Market		Value		Growth		Small		Prime	
		No. of stocks	Weight (%)	No. of stocks	Weight (%)	No. of stocks	Weight (%)	No. of stocks	Weight (%)	No. of stocks	Weight (%)
	Overall	1,383	100.00	1,068	100.00	582	100.00	1,085	100.00	989	100.00
1	Fishery, agriculture & forestry	5	0.11	3	0.07	4	0.14	5	0.62	5	0.11
2	Mining	7	0.47	6	0.93	2	0.01	6	0.49	4	0.47
3	Construction	60	2.24	55	3.18	10	1.30	52	4.98	43	2.18
4	Foods	62	3.60	55	3.09	29	4.11	51	5.36	44	3.58
5	Textiles & apparel	24	0.90	22	0.85	8	0.96	21	1.84	19	0.90
6	Pulp & paper	11	0.40	11	0.79	1	0.01	9	0.94	8	0.39
7	Chemicals	110	6.27	87	5.62	49	6.93	84	7.90	76	6.23
8	Pharmaceuticals	38	4.61	18	1.35	26	7.87	24	2.70	29	4.66
9	Oil & coal products	9	0.98	8	1.65	3	0.30	5	0.47	7	0.99
10	Rubber products	10	0.85	10	1.33	3	0.37	8	0.80	9	0.86
11	Glass & ceramics products	22	1.16	19	0.79	9	1.52	16	1.90	16	1.14
12	Iron & steel	29	1.65	27	2.02	9	1.27	25	2.86	21	1.64
13	Nonferrous metals	20	1.20	13	1.20	9	1.20	13	1.23	18	1.21
14	Metal products	22	0.69	20	0.98	5	0.40	18	1.40	17	0.68
15	Machinery	99	5.02	78	3.63	46	6.40	79	6.45	67	4.95
16	Electric appliances	135	15.00	91	7.24	74	22.76	97	7.71	101	15.14
17	Transportation equipment	64	8.99	52	8.86	33	9.12	47	4.25	47	9.09
18	Precision instruments	21	1.41	10	0.32	15	2.50	15	1.06	16	1.41
19	Other products	35	1.69	28	1.65	14	1.72	29	2.02	24	1.67
20	Electric power & gas	18	3.28	16	5.37	7	1.20	5	0.42	16	3.35
21	Land transportation	33	4.17	21	3.97	20	4.37	17	1.96	25	4.20
22	Marine transportation	7	0.30	6	0.58	2	0.02	4	0.17	6	0.31
23	Air transportation	2	0.29	0	0.00	2	0.57	1	0.08	2	0.29
24	Warehousing & harbor transportation services	13	0.24	13	0.46	3	0.02	11	0.63	7	0.21
25	Information & communications	77	6.99	52	7.55	43	6.44	63	6.25	53	7.03
26	Wholesale trade	100	5.38	93	5.07	19	5.69	90	6.85	52	5.21
27	Retail trade	125	4.42	77	5.23	69	3.61	111	9.56	83	4.28
28	Banks	87	9.00	86	17.90	2	0.10	67	9.46	78	9.14
29	Securities & commodity futures	16	0.96	14	1.83	4	0.08	13	0.85	12	0.96
30	Insurance	6	2.20	4	3.11	4	1.30	0	0.00	6	2.25
31	Other financing business	16	0.91	15	1.69	1	0.13	13	1.95	15	0.92
32	Real estate	37	2.23	24	0.67	18	3.79	31	2.21	24	2.22
33	Services	63	2.41	34	1.02	39	3.79	55	4.61	39	2.33

Source: Nomura

Fig. 5: Russell/Nomura index performance by industrial sector

Monthly returns (as of end-November 2011)

(%)

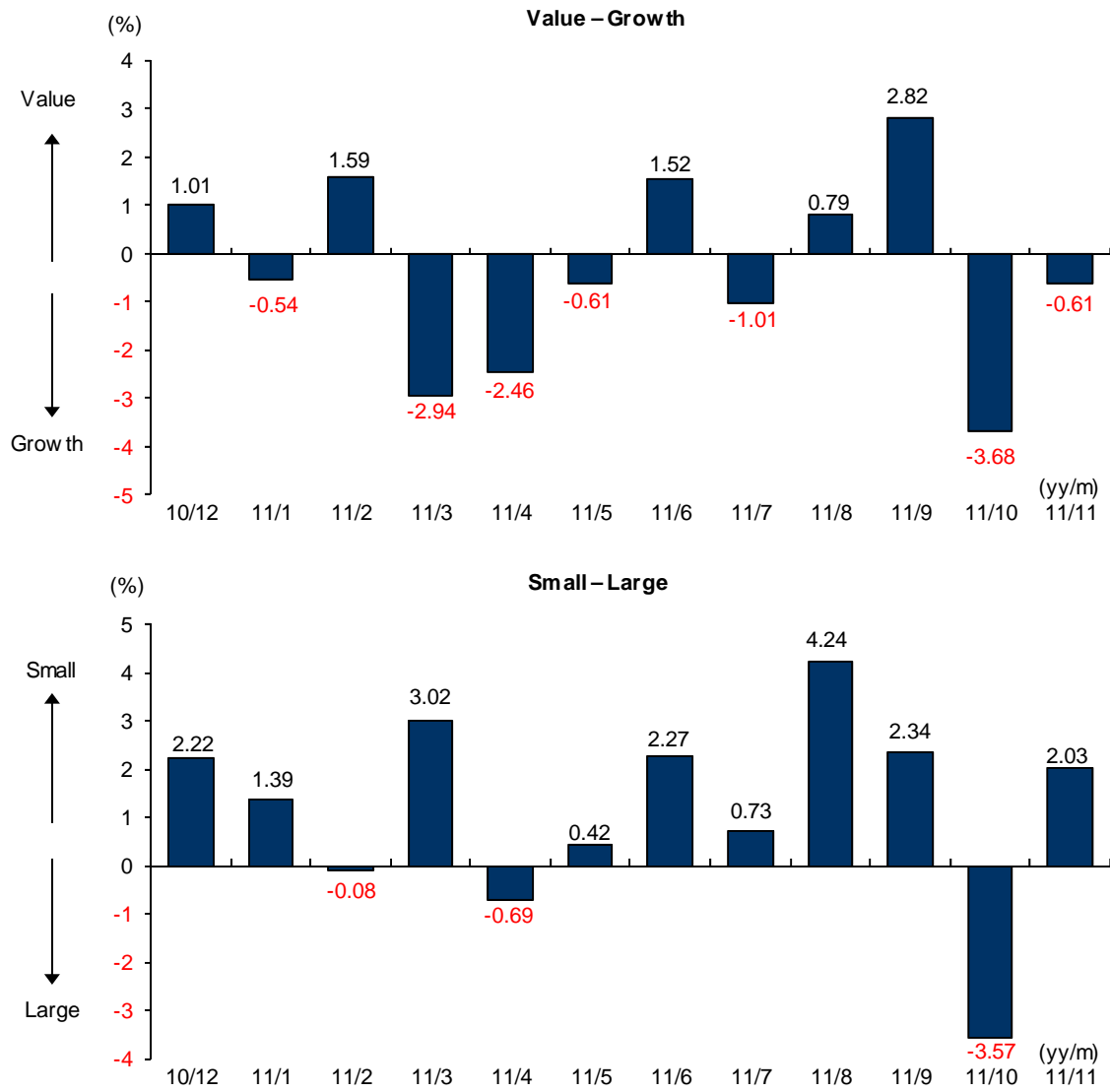
	Index	Total Market		Value		Growth		Small		Prime	
		ex dividends	incl dividends	ex dividends	incl dividends	ex dividends	incl dividends	ex dividends	incl dividends	ex dividends	incl dividends
	Overall	-4.61	-4.61	-4.91	-4.92	-4.31	-4.31	-2.93	-2.92	-4.65	-4.65
1	Fishery, agriculture & forestry	-3.05	-2.88	-4.25	-3.78	-2.40	-2.40	-3.05	-2.88	-3.05	-2.88
2	Mining	-3.96	-3.96	-3.87	-3.87	-11.39	-11.39	-2.92	-2.92	-3.90	-3.90
3	Construction	-6.21	-6.21	-5.36	-5.36	-8.22	-8.22	-2.72	-2.72	-6.46	-6.46
4	Foods	-2.75	-2.74	-1.86	-1.84	-3.42	-3.41	-1.54	-1.49	-2.81	-2.80
5	Textiles & apparel	-3.98	-3.94	-7.77	-7.70	-0.32	-0.32	-3.72	-3.61	-4.08	-4.04
6	Pulp & paper	-3.42	-3.92	-3.54	-4.04	8.99	8.93	-1.31	-1.31	-3.64	-4.15
7	Chemicals	-4.61	-4.59	-5.58	-5.56	-3.81	-3.79	-4.61	-4.67	-4.60	-4.58
8	Pharmaceuticals	-6.27	-6.27	-3.87	-3.86	-6.67	-6.67	-2.07	-2.01	-6.30	-6.30
9	Oil & coal products	2.14	2.14	3.16	3.16	-3.14	-3.14	2.48	2.48	2.19	2.19
10	Rubber products	-5.97	-5.99	-5.91	-5.94	-6.20	-6.20	-5.37	-5.53	-5.99	-6.02
11	Glass & ceramics products	-4.69	-4.69	-4.66	-4.67	-4.70	-4.70	-1.92	-1.93	-4.66	-4.66
12	Iron & steel	-8.85	-8.86	-8.01	-8.01	-10.16	-10.18	-4.77	-4.82	-9.06	-9.08
13	Nonferrous metals	-8.06	-8.14	-7.55	-7.57	-8.57	-8.70	-11.22	-11.23	-8.09	-8.16
14	Metal products	-8.93	-8.91	-9.62	-9.60	-7.15	-7.15	-4.13	-4.08	-9.10	-9.08
15	Machinery	-4.93	-4.92	-4.56	-4.54	-5.14	-5.14	-4.37	-4.24	-4.97	-4.96
16	Electric appliances	-4.50	-4.50	-8.27	-8.31	-3.24	-3.22	-5.11	-5.13	-4.49	-4.48
17	Transportation equipment	-5.36	-5.35	-6.19	-6.19	-4.54	-4.53	-6.74	-6.73	-5.33	-5.32
18	Precision instruments	-5.76	-5.72	0.52	0.37	-6.50	-6.44	-2.72	-2.90	-5.94	-5.90
19	Other products	-5.28	-5.30	-6.82	-6.85	-3.76	-3.76	-2.20	-2.28	-5.31	-5.33
20	Electric power & gas	0.74	0.73	0.49	0.48	1.88	1.86	3.33	3.33	0.75	0.75
21	Land transportation	-2.89	-2.89	-4.14	-4.14	-1.72	-1.72	-2.96	-2.96	-2.92	-2.92
22	Marine transportation	-18.16	-18.16	-18.24	-18.24	-15.74	-15.74	-9.51	-9.51	-18.14	-18.14
23	Air transportation	-2.95	-2.95	-	-	-2.95	-2.95	-17.45	-17.45	-2.95	-2.95
24	Warehousing & harbor transportation services	-6.71	-6.72	-6.70	-6.71	-6.90	-6.93	-3.14	-3.15	-7.26	-7.27
25	Information & communications	-5.87	-5.86	-7.25	-7.25	-4.20	-4.19	-2.68	-2.66	-5.91	-5.91
26	Wholesale trade	-1.47	-1.51	-0.51	-0.49	-2.31	-2.39	-1.11	-1.07	-1.53	-1.57
27	Retail trade	-2.48	-2.46	-1.62	-1.61	-3.70	-3.67	-2.36	-2.31	-2.52	-2.50
28	Banks	-3.79	-3.79	-3.85	-3.85	7.65	7.65	2.57	2.57	-3.80	-3.80
29	Securities & commodity futures	-14.09	-14.09	-14.37	-14.37	-6.98	-6.98	-7.05	-7.05	-14.31	-14.31
30	Insurance	-5.18	-5.18	-4.71	-4.71	-6.29	-6.29	-	-	-5.18	-5.18
31	Other financing business	-6.18	-6.17	-7.71	-7.70	18.65	18.65	-4.41	-4.39	-6.20	-6.20
32	Real estate	-7.11	-7.11	-7.55	-7.53	-7.03	-7.03	-3.89	-3.86	-7.27	-7.27
33	Services	-5.37	-5.37	-3.60	-3.60	-5.84	-5.84	-2.77	-2.77	-5.53	-5.53

Note: * Returns are not annualized.

Source: Nomura

Fig. 6: Monthly performance

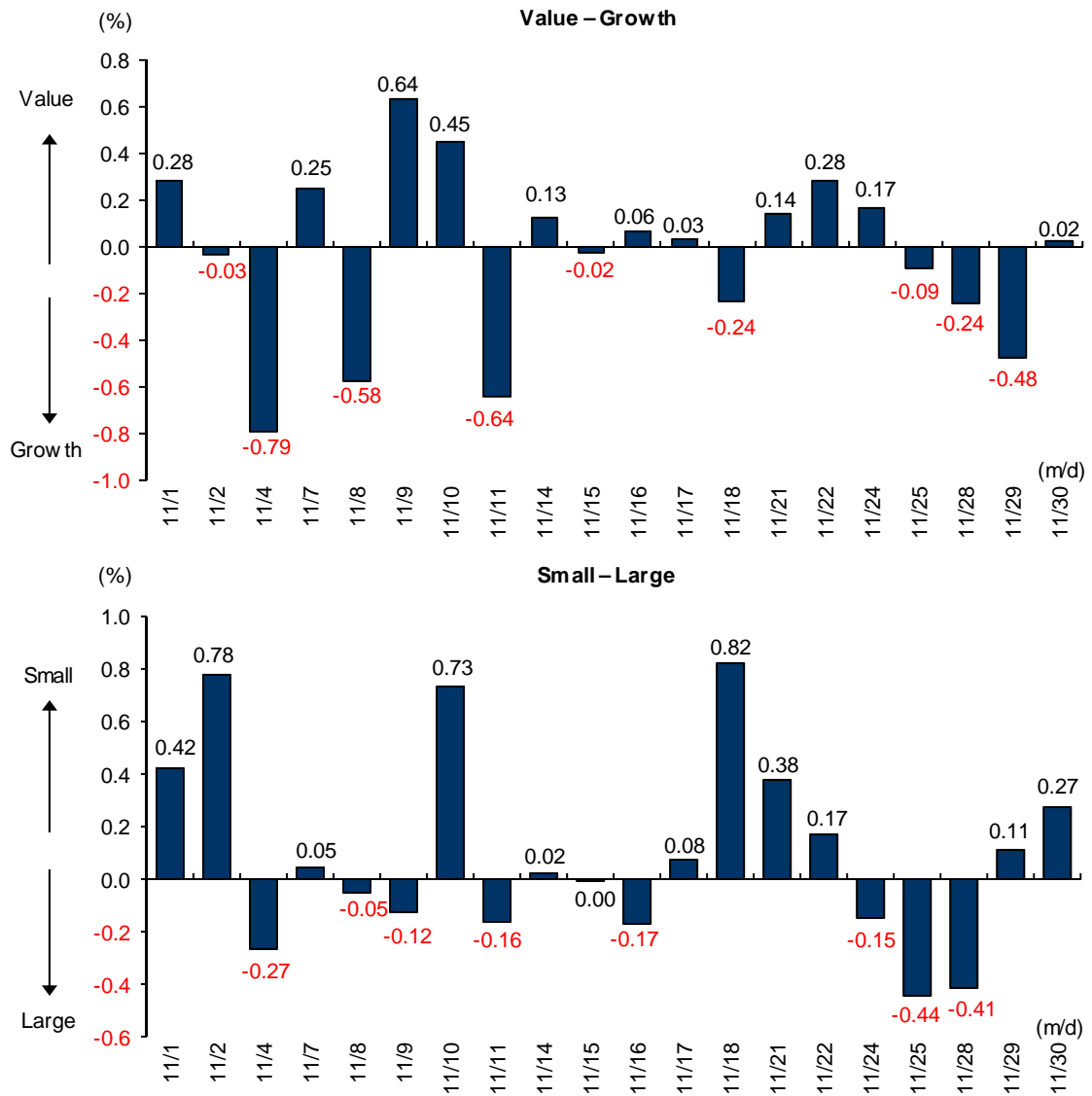
Style: total returns



Note: Value - Growth is the difference between Value and Growth returns. Small - Large is the difference between Small and Large returns. Returns are not annualized.
Source: Nomura

Fig. 7: Daily performance

Style: total returns



Note: Value - Growth is the difference between Value and Growth returns. Small - Large is the difference between Small and Large returns. Returns are not annualized.
Source: Nomura

Fig. 8: Russell/Nomura Japan Equity Indexes

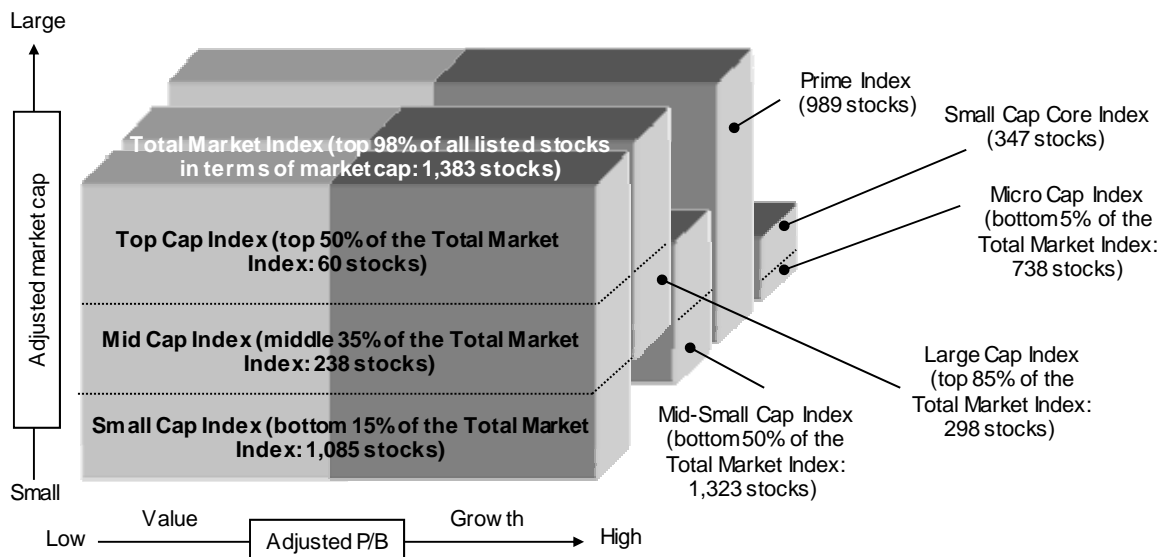
Key indicators (as of end-November 2011)

Index	P/E x	P/B x	Dividend yield %	ROE %	Rec profit growth %
Total Market	15.28	0.88	2.58	5.86	-11.21
Value	15.62	0.67	2.73	4.35	-13.54
Growth	14.96	1.28	2.43	8.77	-8.44
Large	15.75	0.91	2.66	5.90	-14.27
Large Value	16.76	0.69	2.85	4.15	-18.84
Large Growth	14.99	1.26	2.49	8.65	-9.53
Top	14.64	0.89	2.94	6.17	-16.09
Top Value	14.90	0.67	3.22	4.53	-18.85
Top Growth	14.44	1.20	2.73	8.54	-13.38
Mid	17.67	0.96	2.25	5.49	-11.40
Mid Value	20.07	0.72	2.37	3.61	-18.81
Mid Growth	15.92	1.37	2.13	8.85	-3.04
Mid-Small	15.95	0.87	2.24	5.58	-6.09
Mid-Small Value	16.22	0.68	2.36	4.21	-8.90
Mid-Small Growth	15.62	1.38	2.08	9.09	-1.99
Small	13.33	0.75	2.21	5.73	4.61
Small Value	12.83	0.62	2.35	4.94	5.76
Small Growth	14.67	1.41	1.88	9.95	1.61
Small Core	13.76	0.80	2.16	5.93	4.07
Small Core Value	13.33	0.66	2.29	5.00	5.05
Small Core Growth	14.69	1.41	1.90	9.91	1.99
Micro	12.58	0.67	2.31	5.40	5.52
Micro Value	12.08	0.58	2.46	4.84	6.78
Micro Growth	14.63	1.42	1.80	10.08	0.56
Prime	15.37	0.89	2.59	5.88	-11.58
Prime Value	15.83	0.68	2.74	4.32	-14.22
Prime Growth	14.94	1.27	2.44	8.77	-8.51

Note: All financial data are based on current-FY forecasts (with preference given to consolidated figures).

Source: Nomura

Fig. 9: Russell/Nomura Japan Equity Indexes



Note: No. of stocks in each index is as of 30 November 2011.
 Source: Nomura

All the indexes (Total Market, the capitalization indexes, Value, Growth, and Prime) also have indexes based on the 33 industrial sectors. Divisions based on market cap exclude the value of stable shareholdings. Value and Growth indexes are defined in terms of P/B ratios adjusted for unrealized gains/losses.

For composition rules and other information please refer to *Russell/Nomura Japan Equity Indexes rulebook*.

Fig. 10: Russell/Nomura Japan Equity Indexes performance summary

Price returns (excluding dividends), US dollar basis (as of end-November 2011)

Index	No. of stocks	Weight (%)	Index value	Returns (%) *				
				1 month	3 months	6 months	12 months	YTD
Total Market	1,383	100.00	504.08	-3.64	-7.13	-8.95	-8.63	-15.10
Value	1,068	49.98	1,062.53	-3.94	-7.88	-9.03	-10.74	-17.49
Growth	582	50.02	214.34	-3.33	-6.37	-8.87	-6.42	-12.58
Large	298	83.02	482.57	-3.98	-7.31	-10.24	-10.80	-16.86
Large Value	190	38.11	989.47	-4.62	-8.44	-11.06	-14.41	-20.48
Large Growth	198	44.91	222.59	-3.43	-6.32	-9.54	-7.51	-13.53
Top	60	48.85	387.14	-4.19	-7.36	-11.84	-12.98	-18.92
Top Value	38	21.75	867.10	-4.91	-8.71	-12.90	-17.27	-23.00
Top Growth	45	27.10	187.83	-3.60	-6.25	-10.96	-9.20	-15.32
Mid	238	34.18	679.92	-3.68	-7.24	-7.87	-7.51	-13.74
Mid Value	152	16.36	1,087.95	-4.23	-8.09	-8.51	-10.29	-16.87
Mid Growth	153	17.82	323.88	-3.17	-6.44	-7.27	-4.80	-10.65
Mid-Small	1,323	51.15	669.53	-3.11	-6.90	-6.03	-4.07	-11.13
Mid-Small Value	1,030	28.23	1,152.60	-3.19	-7.23	-5.83	-4.99	-12.69
Mid-Small Growth	537	22.92	287.34	-3.02	-6.51	-6.27	-2.92	-9.13
Small	1,085	16.98	632.67	-1.94	-6.22	-2.11	3.62	-5.41
Small Value	878	11.87	1,184.24	-1.71	-6.01	-1.89	3.39	-6.23
Small Growth	384	5.11	229.68	-2.48	-6.72	-2.63	4.18	-3.47
Small Core	347	11.19	109.10	-1.91	-5.57	-2.06	3.41	-5.20
Small Core Value	271	7.41	160.75	-1.46	-5.03	-1.65	2.37	-6.80
Small Core Growth	155	3.78	41.73	-2.79	-6.61	-2.85	5.48	-1.96
Micro	738	5.79	121.20	-2.00	-7.46	-2.20	4.04	-5.80
Micro Value	607	4.46	158.65	-2.11	-7.59	-2.26	5.09	-5.29
Micro Growth	229	1.33	47.63	-1.61	-7.02	-2.00	0.67	-7.49
Prime	989	97.95	819.68	-3.68	-7.11	-9.07	-8.89	-15.31
Prime Value	740	48.37	1,030.51	-4.02	-7.87	-9.21	-11.23	-17.89
Prime Growth	472	49.58	610.24	-3.35	-6.37	-8.92	-6.49	-12.64

Note: * Returns are not annualized.

Source: Nomura

Fig. 11: Russell/Nomura Japan Equity Indexes performance summary

Total returns (including dividends), US dollar basis (as of end-November 2011)

Index	No. of stocks	Weight (%)	Index value	Returns (%) *				
				1 month	3 months	6 months	12 months	YTD
Total Market	1,383	100.00	730.23	-3.64	-6.21	-7.94	-6.48	-13.17
Value	1,068	49.98	1,599.51	-3.95	-6.89	-8.00	-8.53	-15.47
Growth	582	50.02	298.75	-3.33	-5.52	-7.88	-4.34	-10.75
Large	298	83.02	699.95	-3.98	-6.34	-9.20	-8.66	-14.92
Large Value	190	38.11	1,489.57	-4.62	-7.38	-9.97	-12.22	-18.46
Large Growth	198	44.91	311.74	-3.43	-5.45	-8.53	-5.41	-11.67
Top	60	48.85	569.74	-4.19	-6.22	-10.63	-10.64	-16.81
Top Value	38	21.75	1,313.20	-4.91	-7.46	-11.64	-14.88	-20.80
Top Growth	45	27.10	269.89	-3.60	-5.21	-9.81	-6.92	-13.30
Mid	238	34.18	969.70	-3.69	-6.51	-7.05	-5.66	-12.07
Mid Value	152	16.36	1,622.63	-4.25	-7.27	-7.66	-8.39	-15.13
Mid Growth	153	17.82	438.34	-3.17	-5.79	-6.48	-3.00	-9.06
Mid-Small	1,323	51.15	959.23	-3.11	-6.19	-5.20	-2.12	-9.39
Mid-Small Value	1,030	28.23	1,724.65	-3.20	-6.45	-4.97	-2.94	-10.85
Mid-Small Growth	537	22.92	388.85	-3.01	-5.87	-5.49	-1.10	-7.52
Small	1,085	16.98	917.81	-1.93	-5.54	-1.28	5.79	-3.51
Small Value	878	11.87	1,784.83	-1.71	-5.29	-1.02	5.67	-4.23
Small Growth	384	5.11	310.84	-2.44	-6.13	-1.89	6.07	-1.82
Small Core	347	11.19	128.67	-1.91	-4.87	-1.24	5.53	-3.34
Small Core Value	271	7.41	192.25	-1.47	-4.30	-0.81	4.57	-4.87
Small Core Growth	155	3.78	47.64	-2.75	-5.96	-2.06	7.44	-0.24
Micro	738	5.79	144.86	-1.97	-6.81	-1.37	6.30	-3.85
Micro Value	607	4.46	192.59	-2.10	-6.88	-1.37	7.52	-3.18
Micro Growth	229	1.33	54.11	-1.55	-6.59	-1.37	2.39	-6.01
Prime	989	97.95	991.42	-3.68	-6.19	-8.05	-6.74	-13.38
Prime Value	740	48.37	1,269.79	-4.02	-6.88	-8.17	-9.03	-15.88
Prime Growth	472	49.58	725.19	-3.35	-5.51	-7.94	-4.41	-10.80

Note: * Returns are not annualized.

Source: Nomura

Data publication services

Data for the Russell/Nomura Japan Equity Indexes can be obtained via the following channels.

Index values are published in the following media:

- Bloomberg (RNJI)
- Jiji (SQ21, SQ22, SQ23, SQ24)
- QUICK (NRIJ500–503, 510–517)
- Reuters (FRCNRI01, FRCNRI02, FRCNRI03, FRCNRI04)
- Our website (<http://qr.nomura.co.jp/en/frcnri/index.html>)

Daily index values for the Russell/Nomura Prime Index are published in the following media:

- Bloomberg (RNPJ <INDEX>)
- Jiji (RT14 or RNPF/2)
- QUICK (140)
- Reuters (.JRN)
- Our website (<http://qr.nomura.co.jp/en/frcnri/index.html>)

Daily index values for the Russell/Nomura Small Cap Core Index are published in the following media:

- Bloomberg (RNSCC <INDEX>)
- Jiji (RT14 or RNSCC/NOMURA)
- QUICK (130)
- Reuters (.JRNSC)

More detailed data

More detailed data on index values and individual stock information can be obtained through Nomura Research Institute services Aurora, e-Aurora, and IDS.

For information, contact:

Nomura Research Institute
Investment Information Systems Business Department
+81-3-5533-3870
e-mail: ids-sales@nri.co.jp

Rule book:

Russell/Nomura Japan Equity Indexes rulebook

While every effort is made to ensure that the information used in this report and all published information is based on reliable data, it should be noted that at times, data may have changed or been amended.

Appendix A-1

Any Authors named on this report are Research Analysts unless otherwise indicated

Disclaimers

This document contains material that has been prepared by the Nomura entity identified at the top or bottom of page 1 herein, if any, and/or, with the sole or joint contributions of one or more Nomura entities whose employees and their respective affiliations are specified on page 1 herein or identified elsewhere in the document. Affiliates and subsidiaries of Nomura Holdings, Inc. (collectively, the 'Nomura Group'), include: Nomura Securities Co., Ltd. ('NSC') Tokyo, Japan; Nomura International plc ('Nlplc'), UK; Nomura Securities International, Inc. ('NSI'), New York, US; Nomura International (Hong Kong) Ltd. ('NIHK'), Hong Kong; Nomura Financial Investment (Korea) Co., Ltd. ('NFIK'), Korea (Information on Nomura analysts registered with the Korea Financial Investment Association ('KOFIA') can be found on the KOFIA Intranet at <http://dis.kofia.or.kr>); Nomura Singapore Ltd. ('NSL'), Singapore (Registration number 197201440E, regulated by the Monetary Authority of Singapore); Capital Nomura Securities Public Company Limited ('CNS'), Thailand; Nomura Australia Ltd. ('NAL'), Australia (ABN 48 003 032 513), regulated by the Australian Securities and Investment Commission ('ASIC') and holder of an Australian financial services licence number 246412; P.T. Nomura Indonesia ('PTNI'), Indonesia; Nomura Securities Malaysia Sdn. Bhd. ('NSM'), Malaysia; Nomura International (Hong Kong) Ltd., Taipei Branch ('NITB'), Taiwan; Nomura Financial Advisory and Securities (India) Private Limited ('NFASL'), Mumbai, India (Registered Address: Ceejay House, Level 11, Plot F, Shivsagar Estate, Dr. Annie Besant Road, Worli, Mumbai- 400 018, India; Tel: +91 22 4037 4037, Fax: +91 22 4037 4111; SEBI Registration No: BSE INB011299030, NSE INB231299034, INF231299034, INE 231299034, MCX: INE261299034); Banque Nomura France ('BNF'), regulated by the Autorité des marchés financiers and the Autorité de Contrôle Prudentiel; Nlplc, Dubai Branch ('Nlplc, Dubai'); Nlplc, Madrid Branch ('Nlplc, Madrid') and Nlplc, Italian Branch ('Nlplc, Italy').

This material is: (i) for your private information, and we are not soliciting any action based upon it; (ii) not to be construed as an offer to sell or a solicitation of an offer to buy any security in any jurisdiction where such offer or solicitation would be illegal; and (iii) based upon information from sources that we consider reliable, but has not been independently verified by Nomura Group.

Nomura Group does not warrant or represent that the document is accurate, complete, reliable, fit for any particular purpose or merchantable and does not accept liability for any act (or decision not to act) resulting from use of this document and related data. To the maximum extent permissible all warranties and other assurances by Nomura group are hereby excluded and Nomura Group shall have no liability for the use, misuse, or distribution of this information.

Opinions or estimates expressed are current opinions as of the original publication date appearing on this material and the information, including the opinions and estimates contained herein, are subject to change without notice. Nomura Group is under no duty to update this document.

Any comments or statements made herein are those of the author(s) and may differ from views held by other parties within Nomura Group.

Clients should consider whether any advice or recommendation in this report is suitable for their particular circumstances and, if appropriate, seek professional advice, including tax advice. Nomura Group does not provide tax advice.

Nomura Group, and/or its officers, directors and employees, may, to the extent permitted by applicable law and/or regulation, deal as principal, agent, or otherwise, or have long or short positions in, or buy or sell, the securities, commodities or instruments, or options or other derivative instruments based thereon, of issuers or securities mentioned herein. Nomura Group companies may also act as market maker or liquidity provider (as defined within Financial Services Authority ('FSA') rules in the UK) in the financial instruments of the issuer. Where the activity of market maker is carried out in accordance with the definition given to it by specific laws and regulations of the US or other jurisdictions, this will be separately disclosed within the specific issuer disclosures.

This document may contain information obtained from third parties, including ratings from credit ratings agencies such as Standard & Poor's.

Reproduction and distribution of third party content in any form is prohibited except with the prior written permission of the related third party.

Third party content providers do not guarantee the accuracy, completeness, timeliness or availability of any information, including ratings, and are not responsible for any errors or omissions (negligent or otherwise), regardless of the cause, or for the results obtained from the use of such content. Third party content providers give no express or implied warranties, including, but not limited to, any warranties of merchantability or fitness for a particular purpose or use. Third party content providers shall not be liable for any direct, indirect, incidental, exemplary, compensatory, punitive, special or consequential damages, costs, expenses, legal fees, or losses (including lost income or profits and opportunity costs) in connection with any use of their content, including ratings. Credit ratings are statements of opinions and are not statements of fact or recommendations to purchase hold or sell securities. They do not address the suitability of securities or the suitability of securities for investment purposes, and should not be relied on as investment advice.

Any MSCI sourced information in this document is the exclusive property of MSCI Inc. ('MSCI'). Without prior written permission of MSCI, this information and any other MSCI intellectual property may not be reproduced, re-disseminated or used to create any financial products, including any indices. This information is provided on an "as is" basis. The user assumes the entire risk of any use made of this information. MSCI, its affiliates and any third party involved in, or related to, computing or compiling the information hereby expressly disclaim all warranties of originality, accuracy, completeness, merchantability or fitness for a particular purpose with respect to any of this information. Without limiting any of the foregoing, in no event shall MSCI, any of its affiliates or any third party involved in, or related to, computing or compiling the information have any liability for any damages of any kind. MSCI and the MSCI indexes are services marks of MSCI and its affiliates.

Investors should consider this document as only a single factor in making their investment decision and, as such, the report should not be viewed as identifying or suggesting all risks, direct or indirect, that may be associated with any investment decision. Nomura Group produces a number of different types of research product including, among others, fundamental analysis, quantitative analysis and short term trading ideas; recommendations contained in one type of research product may differ from recommendations contained in other types of research product, whether as a result of differing time horizons, methodologies or otherwise. Nomura Group publishes research product in a number of different ways including the posting of product on Nomura Group portals and/or distribution directly to clients. Different groups of clients may receive different products and services from the research department depending on their individual requirements.

Figures presented herein may refer to past performance or simulations based on past performance which are not reliable indicators of future performance. Where the information contains an indication of future performance, such forecasts may not be a reliable indicator of future performance. Moreover, simulations are based on models and simplifying assumptions which may oversimplify and not reflect the future distribution of returns.

Certain securities are subject to fluctuations in exchange rates that could have an adverse effect on the value or price of, or income derived from, the investment.

The securities described herein may not have been registered under the US Securities Act of 1933 (the '1933 Act'), and, in such case, may not be offered or sold in the US or to US persons unless they have been registered under the 1933 Act, or except in compliance with an exemption from the registration requirements of the 1933 Act. Unless governing law permits otherwise, any transaction should be executed via a Nomura entity in your home jurisdiction.

This document has been approved for distribution in the UK and European Economic Area as investment research by Nlplc, which is authorized and regulated by the FSA and is a member of the London Stock Exchange. It does not constitute a personal recommendation, as defined by the FSA, or take into account the particular investment objectives, financial situations, or needs of individual investors. It is intended only for investors who are 'eligible counterparties' or 'professional clients' as defined by the FSA, and may not, therefore, be redistributed to retail clients as defined by the FSA. This document has been approved by NIHK, which is regulated by the Hong Kong Securities and Futures Commission,

for distribution in Hong Kong by NIHK. This document has been approved for distribution in Australia by NAL, which is authorized and regulated in Australia by the ASIC. This document has also been approved for distribution in Malaysia by NSM. In Singapore, this document has been distributed by NSL. NSL accepts legal responsibility for the content of this document, where it concerns securities, futures and foreign exchange, issued by their foreign affiliates in respect of recipients who are not accredited, expert or institutional investors as defined by the Securities and Futures Act (Chapter 289). Recipients of this document in Singapore should contact NSL in respect of matters arising from, or in connection with, this document. Unless prohibited by the provisions of Regulation S of the 1933 Act, this material is distributed in the US, by NSI, a US-registered broker-dealer, which accepts responsibility for its contents in accordance with the provisions of Rule 15a-6, under the US Securities Exchange Act of 1934.

This document has not been approved for distribution in the Kingdom of Saudi Arabia ('Saudi Arabia') or to clients other than 'professional clients' in the United Arab Emirates ('UAE') by Nomura Saudi Arabia, Nlpic or any other member of Nomura Group, as the case may be. Neither this document nor any copy thereof may be taken or transmitted or distributed, directly or indirectly, by any person other than those authorised to do so into Saudi Arabia or in the UAE or to any person located in Saudi Arabia or to clients other than 'professional clients' in the UAE. By accepting to receive this document, you represent that you are not located in Saudi Arabia or that you are a 'professional client' in the UAE and agree to comply with these restrictions. Any failure to comply with these restrictions may constitute a violation of the laws of Saudi Arabia or the UAE.

No part of this material may be (i) copied, photocopied, or duplicated in any form, by any means; or (ii) redistributed without the prior written consent of a member of Nomura Group. Further information on any of the securities mentioned herein may be obtained upon request. If this document has been distributed by electronic transmission, such as e-mail, then such transmission cannot be guaranteed to be secure or error-free as information could be intercepted, corrupted, lost, destroyed, arrive late or incomplete, or contain viruses. The sender therefore does not accept liability for any errors or omissions in the contents of this document, which may arise as a result of electronic transmission. If verification is required, please request a hard-copy version.

Disclaimers required in Japan

Investors in the financial products offered by Nomura Securities may incur fees and commissions specific to those products (for example, transactions involving Japanese equities are subject to a sales commission of up to 1.365% (tax included) of the transaction amount or a commission of ¥2,730 (tax included) for transactions of ¥200,000 or less, while transactions involving investment trusts are subject to various fees, such as sales commissions and trust fees, specific to each investment trust). In addition, all products carry the risk of losses owing to price fluctuations or other factors. Fees and risks vary by product. Please thoroughly read the written materials provided, such as documents delivered before making a contract, listed securities documents, or prospectuses.

Transactions involving Japanese equities (including Japanese REITs and Japanese ETFs) are subject to a sales commission of up to 1.365% (tax included) of the transaction amount (or a commission of ¥2,730 (tax included) for transactions of ¥200,000 or less). When Japanese equities are purchased via OTC transactions (including offerings), only the purchase price shall be paid, with no sales commission charged. However, Nomura Securities may charge a separate fee for OTC transactions, as agreed with the customer. Japanese equities carry the risk of losses owing to price fluctuations. Japanese REITs carry the risk of losses owing to fluctuations in price and/or earnings of underlying real estate. Japanese ETFs carry the risk of losses owing to fluctuations in the underlying equity indexes or other benchmarks.

Transactions involving foreign equities are subject to a domestic sales commission of up to 0.9975% (tax included) of the transaction amount (which equals the local transaction amount plus local fees and taxes in the case of a purchase or the local transaction amount minus local fees and taxes in the case of a sale) (for transaction amounts of ¥750,000 and below, maximum domestic sales commission is ¥7,455 tax included). Local fees and taxes in foreign financial instruments markets vary by country/territory. When foreign equities are purchased via OTC transactions (including offerings), only the purchase price shall be paid, with no sales commission charged. However, Nomura Securities may charge a separate fee for OTC transactions, as agreed with the customer. Foreign equities carry the risk of losses owing to factors such as price fluctuations and foreign exchange rate fluctuations.

Margin transactions are subject to a sales commission of up to 1.365% (tax included) of the transaction amount (or a commission of ¥2,730 (tax included) for transactions of ¥200,000 or less), as well as management fees and rights handling fees. In addition, long margin transactions are subject to interest on the purchase amount, while short margin transactions are subject to fees for the lending of the shares borrowed. A margin equal to at least 30% of the transaction amount and at least ¥300,000 is required. With margin transactions, an amount up to roughly 3.3x the margin may be traded. Margin transactions therefore carry the risk of losses in excess of the margin owing to share price fluctuations. For details, please thoroughly read the written materials provided, such as listed securities documents or documents delivered before making a contract.

Transactions involving convertible bonds are subject to a sales commission of up to 1.05% (tax included) of the transaction amount (or a commission of ¥4,200 (tax included) if this would be less than ¥4,200). When convertible bonds are purchased via OTC transactions (including offerings), only the purchase price shall be paid, with no sales commission charged. However, Nomura Securities may charge a separate fee for OTC transactions, as agreed with the customer. Convertible bonds carry the risk of losses owing to factors such as interest rate fluctuations and price fluctuations in the underlying stock. In addition, convertible bonds denominated in foreign currencies also carry the risk of losses owing to factors such as foreign exchange rate fluctuations.

When bonds are purchased via public offerings, secondary distributions, or other OTC transactions with Nomura Securities, only the purchase price shall be paid, with no sales commission charged. Bonds carry the risk of losses, as prices fluctuate in line with changes in market interest rates. In addition, foreign currency-denominated bonds also carry the risk of losses owing to factors such as foreign exchange rate fluctuations.

When Japanese government bonds (JGBs) for individual investors are purchased via public offerings, only the purchase price shall be paid, with no sales commission charged. When JGBs for individual investors are sold before maturity, an amount calculated via the following formula will be subtracted from the par value of the bond plus accrued interest: for 10-year variable rate bonds, an amount equal to the two preceding coupon payments (before tax) x 0.8; for 5-year fixed rate bonds, an amount equal to the four preceding coupon payments (before tax) x 0.8.

Purchases of investment trusts (and sales of some investment trusts) are subject to a fee of up to 5.25% (tax included) of the transaction amount. Also, a direct cost that may be incurred when selling investment trusts is a fee of up to 2.0% of the unit price at the time of redemption. Indirect costs that may be incurred during the course of holding investment trusts include, for domestic investment trusts, a trust fee of up to 5.25% (tax included, annualized basis) of the net assets in trust, as well as fees based on investment performance. Other indirect costs may

also be incurred. For foreign investment trusts, indirect fees may be incurred during the course of holding such as investment company compensation.

Investment trusts invest mainly in securities such as Japanese and foreign equities and bonds, whose prices fluctuate. Investment trust unit prices fluctuate owing to price fluctuations in the underlying assets and to foreign exchange rate fluctuations. As such, investment trusts carry the risk of losses. Fees and risks vary by investment trust. Maximum applicable fees are subject to change; please thoroughly read the written materials provided, such as prospectuses or documents delivered before making a contract.

An annual account maintenance fee of up to ¥1,575 (tax included) is charged for any account held with Nomura Securities containing equities or investment securities. An additional annual account maintenance fee of up to ¥3,150 (tax included) is charged for any account containing foreign securities. No account fee will be charged for other marketable securities or monies deposited. Transfers of equities to another securities company via the Japan Securities Depository Center are subject to a transfer fee of up to ¥10,500 (tax included) per issue transferred depending on volume.

Nomura Securities Co., Ltd.

Financial instruments firm registered with the Kanto Local Finance Bureau (registration No. 142)

Member associations: Japan Securities Dealers Association; Japan Securities Investment Advisers Association; The Financial Futures Association of Japan; and Type II Financial Instruments Firms Association.

Nomura Group manages conflicts with respect to the production of research through its compliance policies and procedures (including, but not limited to, Conflicts of Interest, Chinese Wall and Confidentiality policies) as well as through the maintenance of Chinese walls and employee training.

Additional information is available upon request. Disclosure information is available at the Nomura Disclosure web page: <http://go.nomuranow.com/research/globalresearchportal/pages/disclosures/disclosures.aspx>