

Russell/Nomura Japan Equity Indexes

EQUITY: INDEX SERVICES DEPARTMENT

Performance summary

Research Analysts

[Japan index products](#)

Index Services Department - NFRC

idx_mgr@nfrco.jp



Fig. 1: Russell/Nomura Japan Equity Indexes performance summary

As of end-August 2023

Total return (including dividends)

(Index)	No of stocks	Weight (%)	Index value	Returns (%) *				
				1 month	3 month	6 month	12 month	YTD
Total Market	1489	100.00	990.35	0.29	9.37	18.61	21.99	25.12
Value	1095	51.18	2225.54	1.47	15.71	22.83	31.23	31.03
Growth	767	48.82	390.09	-0.91	3.43	14.51	13.68	19.49
Large	299	85.54	955.11	0.06	9.13	19.23	22.53	25.99
Large Value	201	42.04	2089.25	1.20	16.06	23.66	32.13	32.00
Large Growth	186	43.49	410.21	-1.02	3.17	15.26	14.56	20.69
Top	60	52.28	798.13	-0.80	8.44	19.67	23.51	26.46
Top Value	38	24.30	2028.90	0.11	16.53	26.15	36.13	33.58
Top Growth	44	27.98	353.29	-1.57	2.28	14.57	14.27	20.89
Mid	239	33.25	1274.22	1.43	10.23	18.55	21.04	25.26
Mid Value	163	17.74	1967.12	2.74	15.44	20.42	26.98	29.90
Mid Growth	142	15.51	581.01	-0.02	4.82	16.51	15.09	20.34
Mid-Small	1429	47.72	1254.26	1.52	10.40	17.48	20.39	23.69
Mid-Small Value	1057	26.88	2167.69	2.73	14.98	19.98	27.09	28.80
Mid-Small Growth	723	20.84	503.70	0.00	5.01	14.42	12.89	17.67
Small	1190	14.46	1197.99	1.72	10.80	15.08	18.94	20.24
Small Value	894	9.13	2378.33	2.71	14.09	19.13	27.25	26.72
Small Growth	581	5.33	381.07	0.06	5.58	8.77	6.87	10.54
Small Core	399	10.00	386.47	1.57	10.68	16.13	19.12	20.87
Small Core Value	284	6.05	578.76	2.60	14.27	20.48	27.97	27.82
Small Core Growth	216	3.95	139.86	0.03	5.59	10.04	7.62	11.54
Micro	791	4.46	464.10	2.05	11.06	12.82	18.51	18.85
Micro Value	610	3.08	646.62	2.93	13.75	16.55	25.86	24.61
Micro Growth	365	1.38	148.27	0.13	5.54	5.32	4.80	7.79
Prime	994	97.98	2780.12	0.27	9.33	18.72	22.02	25.22
Prime Value	714	49.76	3653.43	1.43	15.74	22.99	31.32	31.15
Prime Growth	539	48.23	1959.50	-0.90	3.42	14.64	13.78	19.66

Note: * Returns are not annualized.

Source: Nomura Fiduciary Research & Consulting Co., Ltd. (NFRC)

*Japanese version published on 1 September 2023.

What are the Russell/Nomura Japan Equity Indexes?

The Russell/Nomura Japan Equity Indexes are Japanese equity indexes developed jointly by Nomura Fiduciary Research & Consulting Co., Ltd. and Frank Russell Company.^[1]

Russell/Nomura Japan Equity Indexes should be useful in:

- Determining investment strategies (strategic asset allocation)
- Determining manager structures
- Devising asset management benchmarks
- Supporting portfolio management activities
- Evaluating the performance of various investment styles
- Managing risk

Russell/Nomura Japan Equity Indexes have the following characteristics:

- They are share price indexes that are weighted by free float-adjusted market capitalization and cover the top 98% of all listed stocks in terms of float-adjusted market capitalization, thereby offering broad market coverage
- Stocks are chosen from the whole Japanese stock market^[2]
- Because the indexes take into consideration the stable shareholding ratio, they reflect the stocks that are actually available for investment
- There are style indexes for large and small companies and for value and growth stocks
- The Prime Index consists of the top 1,000 stocks in the Total Market Index by market cap excluding stable shareholdings
- Stocks are selected quantitatively based on clearly defined criteria
- The composition of each index is reviewed once a year

Complete details of rules for the Russell/Nomura Japan Equity Index can be found in the Russell/Nomura Japan Equity Indexes rulebook.

1. NFRC took over the index business of Nomura Securities Co., Ltd., effective 1 February 2023.

2. Tokyo Stock Exchange (Prime Market, Standard Market, Growth Market, and TOKYO PRO Market), Nagoya Stock Exchange, Sapporo Securities Exchange, and Fukuoka Stock Exchange.

Fig. 2: Russell/Nomura Japan Equity Indexes performance summary

As of end-August 2023

Price return (excluding dividends)

(Index)	No of stocks	Weight (%)	Index value	Returns (%) *				
				1 month	3 month	6 month	12 month	YTD
Total Market	1489	100.00	528.58	0.27	9.20	17.00	18.81	23.38
Value	1095	51.18	1080.10	1.45	15.51	20.61	26.76	28.61
Growth	767	48.82	228.80	-0.94	3.28	13.44	11.64	18.33
Large	299	85.54	507.55	0.04	8.97	17.63	19.33	24.26
Large Value	201	42.04	1004.68	1.19	15.87	21.41	27.53	29.56
Large Growth	186	43.49	238.80	-1.05	3.03	14.18	12.49	19.53
Top	60	52.28	410.72	-0.81	8.31	18.10	20.40	24.79
Top Value	38	24.30	949.24	0.10	16.38	23.98	31.69	31.28
Top Growth	44	27.98	196.99	-1.59	2.17	13.42	12.09	19.65
Mid	239	33.25	705.97	1.40	10.02	16.89	17.70	23.44
Mid Value	163	17.74	983.85	2.72	15.19	18.05	22.19	27.28
Mid Growth	142	15.51	359.02	-0.07	4.64	15.59	13.23	19.32
Mid-Small	1429	47.72	691.04	1.48	10.19	15.82	17.14	21.87
Mid-Small Value	1057	26.88	1087.78	2.70	14.74	17.71	22.61	26.29
Mid-Small Growth	723	20.84	311.28	-0.06	4.82	13.47	11.05	16.60
Small	1190	14.46	649.91	1.66	10.59	13.43	15.88	18.41
Small Value	894	9.13	1199.45	2.66	13.89	17.05	23.31	24.42
Small Growth	581	5.33	235.35	-0.01	5.35	7.74	5.10	9.37
Small Core	399	10.00	258.57	1.51	10.47	14.51	16.16	19.09
Small Core Value	284	6.05	369.39	2.55	14.06	18.42	24.10	25.55
Small Core Growth	216	3.95	101.90	-0.03	5.39	8.99	5.85	10.38
Micro	791	4.46	303.98	1.98	10.84	11.11	15.24	16.91
Micro Value	610	3.08	401.84	2.88	13.54	14.45	21.79	22.25
Micro Growth	365	1.38	110.27	0.04	5.26	4.34	3.02	6.60
Prime	994	97.98	1776.35	0.25	9.16	17.12	18.85	23.48
Prime Value	714	49.76	2163.90	1.41	15.55	20.77	26.84	28.74
Prime Growth	539	48.23	1347.08	-0.93	3.27	13.57	11.74	18.49

Note: * Returns are not annualized.

Source: NFRC

Fig. 3: Russell/Nomura Japan Equity Indexes performance summary

As of end-August 2023

Total return (including dividends)

Index	No. of stocks	Weight (%)	Index value	Returns (%) *				
				1 month	3 months	6 months	12 months	YTD
Total Market	1489	100.00	990.35	0.29	9.37	18.61	21.99	25.12
Value	1095	51.18	2225.54	1.47	15.71	22.83	31.23	31.03
Growth	767	48.82	390.09	-0.91	3.43	14.51	13.68	19.49
Large	299	85.54	955.11	0.06	9.13	19.23	22.53	25.99
Large Value	201	42.04	2089.25	1.20	16.06	23.66	32.13	32.00
Large Growth	186	43.49	410.21	-1.02	3.17	15.26	14.56	20.69
Top	60	52.28	798.13	-0.80	8.44	19.67	23.51	26.46
Top Value	38	24.30	2028.90	0.11	16.53	26.15	36.13	33.58
Top Growth	44	27.98	353.29	-1.57	2.28	14.57	14.27	20.89
Mid	239	33.25	1274.22	1.43	10.23	18.55	21.04	25.26
Mid Value	163	17.74	1967.12	2.74	15.44	20.42	26.98	29.90
Mid Growth	142	15.51	581.01	-0.02	4.82	16.51	15.09	20.34
Mid-Small	1429	47.72	1254.26	1.52	10.40	17.48	20.39	23.69
Mid-Small Value	1057	26.88	2167.69	2.73	14.98	19.98	27.09	28.80
Mid-Small Growth	723	20.84	503.70	0.00	5.01	14.42	12.89	17.67
Small	1190	14.46	1197.99	1.72	10.80	15.08	18.94	20.24
Small Value	894	9.13	2378.33	2.71	14.09	19.13	27.25	26.72
Small Growth	581	5.33	381.07	0.06	5.58	8.77	6.87	10.54
Small Core	399	10.00	386.47	1.57	10.68	16.13	19.12	20.87
Small Core Value	284	6.05	578.76	2.60	14.27	20.48	27.97	27.82
Small Core Growth	216	3.95	139.86	0.03	5.59	10.04	7.62	11.54
Micro	791	4.46	464.10	2.05	11.06	12.82	18.51	18.85
Micro Value	610	3.08	646.62	2.93	13.75	16.55	25.86	24.61
Micro Growth	365	1.38	148.27	0.13	5.54	5.32	4.80	7.79
Prime	994	97.98	2780.12	0.27	9.33	18.72	22.02	25.22
Prime Value	714	49.76	3653.43	1.43	15.74	22.99	31.32	31.15
Prime Growth	539	48.23	1959.50	-0.90	3.42	14.64	13.78	19.66

Note: * Returns are not annualized.

Source: NFRC

Fig. 4: Russell/Nomura index data by industrial sector

As of end-August 2023

Number of stocks and weighting

(Index)	Total Market		Value		Growth		Small		Prime	
	No of stocks	Weight (%)	No of stocks	Weight (%)	No of stocks	Weight (%)	No of stocks	Weight (%)	No of stocks	Weight (%)
Overall	1489	100.00	1095	100.00	767	100.00	1190	100.00	994	100.00
Fishery, agriculture & forestry	6	0.09	5	0.13	3	0.04	6	0.59	4	0.08
Mining	5	0.38	5	0.75	0	0.00	4	0.30	2	0.37
Construction	68	2.14	64	3.95	14	0.24	58	4.82	41	2.06
Foods	62	3.35	51	2.70	36	4.04	48	4.77	41	3.34
Textiles & apparels	19	0.41	17	0.64	5	0.16	18	1.61	11	0.38
Pulp & paper	8	0.17	8	0.33	1	0.00	7	0.66	6	0.16
Chemicals	116	6.25	94	4.72	50	7.85	90	7.50	76	6.23
Pharmaceuticals	39	5.12	20	2.84	26	7.51	27	2.36	33	5.21
Oil & coal products	5	0.45	5	0.88	0	0.00	3	0.46	3	0.45
Rubber products	9	0.69	9	1.15	2	0.20	8	1.19	7	0.69
Glass & ceramics products	22	0.73	19	1.12	6	0.32	18	2.22	18	0.73
Iron and steel	16	0.92	16	1.79	1	0.01	14	1.91	12	0.92
Nonferrous metals	19	0.69	17	1.27	4	0.08	16	1.88	14	0.68
Metal products	21	0.50	20	0.76	6	0.23	18	1.78	15	0.48
Machinery	103	5.61	93	5.13	44	6.10	84	6.70	66	5.55
Electric appliances	123	18.10	98	10.08	69	26.51	87	7.96	90	18.30
Transportation equipment	43	7.12	41	11.90	8	2.10	29	2.17	32	7.21
Precision equipment	26	2.43	17	0.45	16	4.51	20	2.07	19	2.46
Other products	35	2.33	22	0.92	20	3.82	29	2.15	24	2.34
Electric power & gas	20	1.33	18	2.57	3	0.04	12	1.31	19	1.35
Land transportation	41	2.89	37	3.06	26	2.70	22	1.97	31	2.90
Marine transportation	6	0.76	6	1.49	1	0.01	3	0.14	4	0.77
Air transportation	2	0.45	2	0.21	2	0.70	0	0.00	2	0.46
Warehousing & harbor transportation services	9	0.14	8	0.25	2	0.02	8	0.63	5	0.13
Information & communication	149	8.57	49	3.85	139	13.52	127	9.43	86	8.53
Wholesale trade	100	6.83	91	11.47	35	1.96	89	7.51	58	6.77
Retail trade	130	4.15	79	1.93	90	6.48	109	8.70	86	4.05
Banks	65	6.52	65	12.72	1	0.02	53	5.53	48	6.57
Securities & commodity futures	18	0.72	14	1.32	6	0.10	15	0.87	10	0.70
Insurance	8	2.41	7	3.69	4	1.07	2	0.12	8	2.46
Other financing business	21	1.19	18	1.78	7	0.57	18	2.22	19	1.21
Real estate	45	1.87	34	2.56	25	1.15	34	1.85	27	1.84
Services	130	4.69	46	1.58	115	7.95	114	6.64	77	4.62

Source: NFRC

Fig. 5: Russell/Nomura index data by industrial sector

As of end-August 2023

Monthly return*

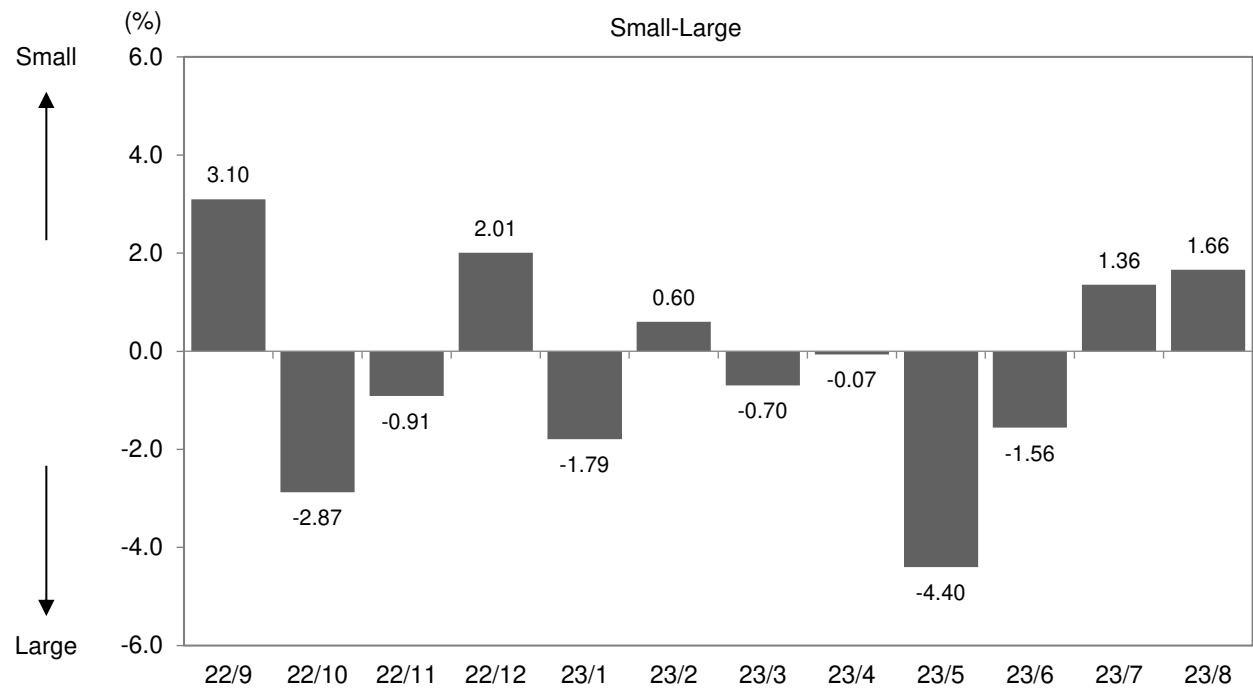
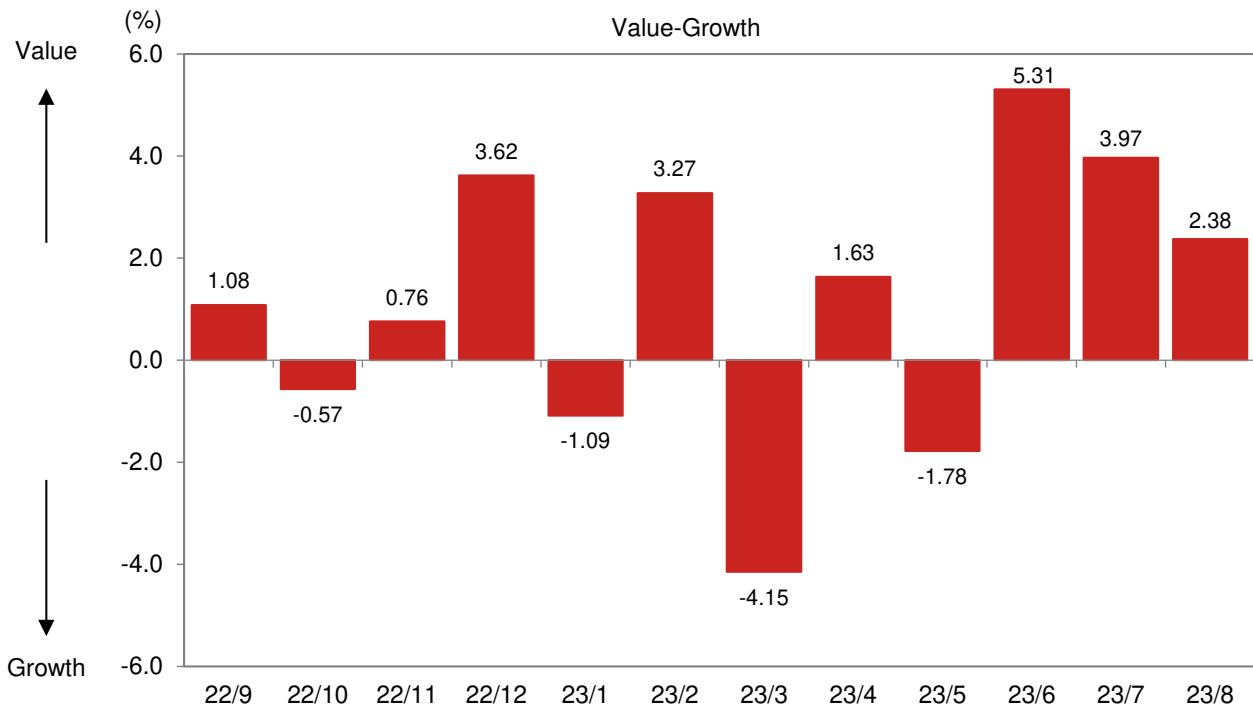
Index	Total Market		Value		Growth		Small		Prime	
	excl dividends	incl dividends	excl dividends	incl dividends	excl dividends	incl dividends	excl dividends	incl dividends	excl dividends	incl dividends
Total	0.27	0.29	1.45	1.47	-0.94	-0.91	1.66	1.72	0.25	0.27
Fishery, agriculture & forestry	6.83	6.83	7.80	7.80	3.90	3.90	6.83	6.83	7.62	7.62
Mining	9.69	9.93	9.69	9.93	-	-	0.11	0.11	10.01	10.26
Construction	3.15	3.16	3.19	3.19	2.54	2.73	3.89	3.93	3.30	3.32
Foods	4.36	4.37	5.17	5.19	3.80	3.80	9.14	9.17	4.37	4.38
Textiles & apparels	-2.61	-2.61	-1.00	-1.00	-8.80	-8.80	-3.69	-3.69	-2.69	-2.69
Pulp & paper	3.81	3.81	3.81	3.81	-1.03	-1.03	1.99	1.99	4.13	4.13
Chemicals	0.36	0.36	0.42	0.42	0.32	0.32	0.21	0.22	0.40	0.40
Pharmaceuticals	4.13	4.13	5.41	5.43	3.63	3.63	7.54	7.64	4.14	4.14
Oil & coal products	6.61	6.61	6.61	6.61	-	-	15.22	15.22	6.84	6.84
Rubber products	-1.94	-1.92	-1.64	-1.61	-3.74	-3.74	4.54	4.62	-2.24	-2.22
Glass & ceramics products	1.98	1.98	3.30	3.30	-2.53	-2.53	2.06	2.06	2.10	2.10
Iron & steel	5.38	5.38	5.45	5.45	-4.71	-4.71	7.62	7.62	5.50	5.50
Nonferrous metals	-2.64	-2.64	-2.61	-2.60	-3.23	-3.23	-0.16	-0.15	-2.54	-2.54
Metal products	0.90	0.93	1.38	1.42	-0.78	-0.76	6.52	6.54	0.95	0.97
Machinery	-0.09	-0.09	5.95	5.95	-4.87	-4.87	0.65	0.65	-0.23	-0.23
Electric appliances	-3.45	-3.44	-2.09	-2.09	-3.98	-3.97	-1.34	-1.35	-3.54	-3.54
Transportation equipment	3.26	3.27	3.39	3.39	2.52	2.52	2.42	2.42	3.22	3.22
Precision equipment	-4.69	-4.68	-4.35	-4.35	-4.72	-4.71	1.48	1.55	-4.67	-4.66
Other products	-0.37	-0.36	3.24	3.25	-1.24	-1.23	1.63	1.67	-0.40	-0.39
Electric power & gas	6.14	6.14	6.35	6.35	-7.46	-7.46	-1.56	-1.56	6.17	6.17
Land transportation	2.37	2.37	2.62	2.62	2.07	2.07	1.42	1.42	2.39	2.39
Marine transportation	12.10	12.10	12.16	12.16	-3.73	-3.73	8.73	8.73	12.23	12.23
Air transportation	-2.95	-2.95	-2.81	-2.81	-3.00	-3.00	-	-	-2.95	-2.95
Warehousing & harbor transportation services	3.80	3.85	3.76	3.76	4.36	5.03	6.34	6.42	4.15	4.15
Information & communication	-0.09	-0.09	-4.97	-4.97	1.46	1.47	-3.52	-3.51	0.02	0.03
Wholesale trade	-1.35	-1.34	-1.23	-1.23	-2.05	-2.01	3.37	3.44	-1.40	-1.39
Retail trade	1.25	1.66	4.15	4.72	0.38	0.74	3.76	4.12	1.14	1.56
Banks	0.87	0.88	0.87	0.88	0.32	0.32	3.47	3.47	0.84	0.85
Securities & commodity futures	0.25	0.25	0.35	0.35	-1.08	-1.10	1.01	1.00	0.02	0.02
Insurance	-1.60	-1.60	-1.78	-1.78	-0.95	-0.95	-1.80	-1.80	-1.60	-1.60
Other financing business	0.23	0.26	-0.18	-0.14	1.60	1.60	-0.44	-0.31	0.19	0.22
Real estate	4.60	4.62	5.05	5.08	3.56	3.57	2.34	2.49	4.62	4.64
Services	0.55	0.58	1.41	1.42	0.37	0.41	-0.94	-0.84	0.60	0.63

Note: * Returns are not annualized.

Source: NFRC

Fig. 6: Monthly performance

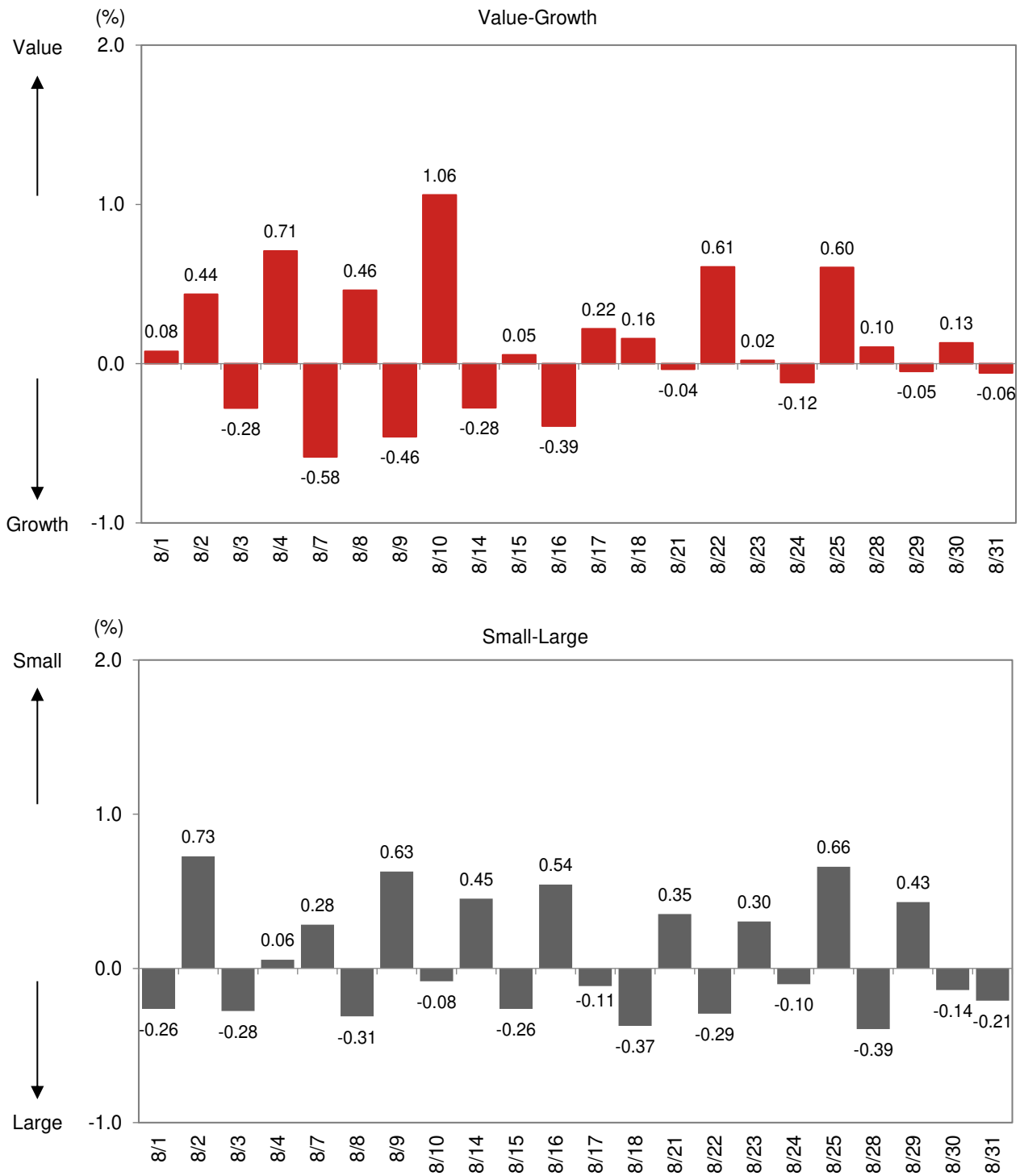
Total return



Note: Value-Growth is the difference between Value and Growth returns. Small-Large is the difference between Small and Large returns. Returns are not annualized.
Source: NFRC

Fig. 7: Daily performance

Total return



Note: Value-Growth is the difference between Value and Growth returns. Small-Large is the difference between Small and Large returns. Returns are not annualized. Source: NFRC

Fig. 8: Russell/Nomura Japan Equity Indexes key indicators

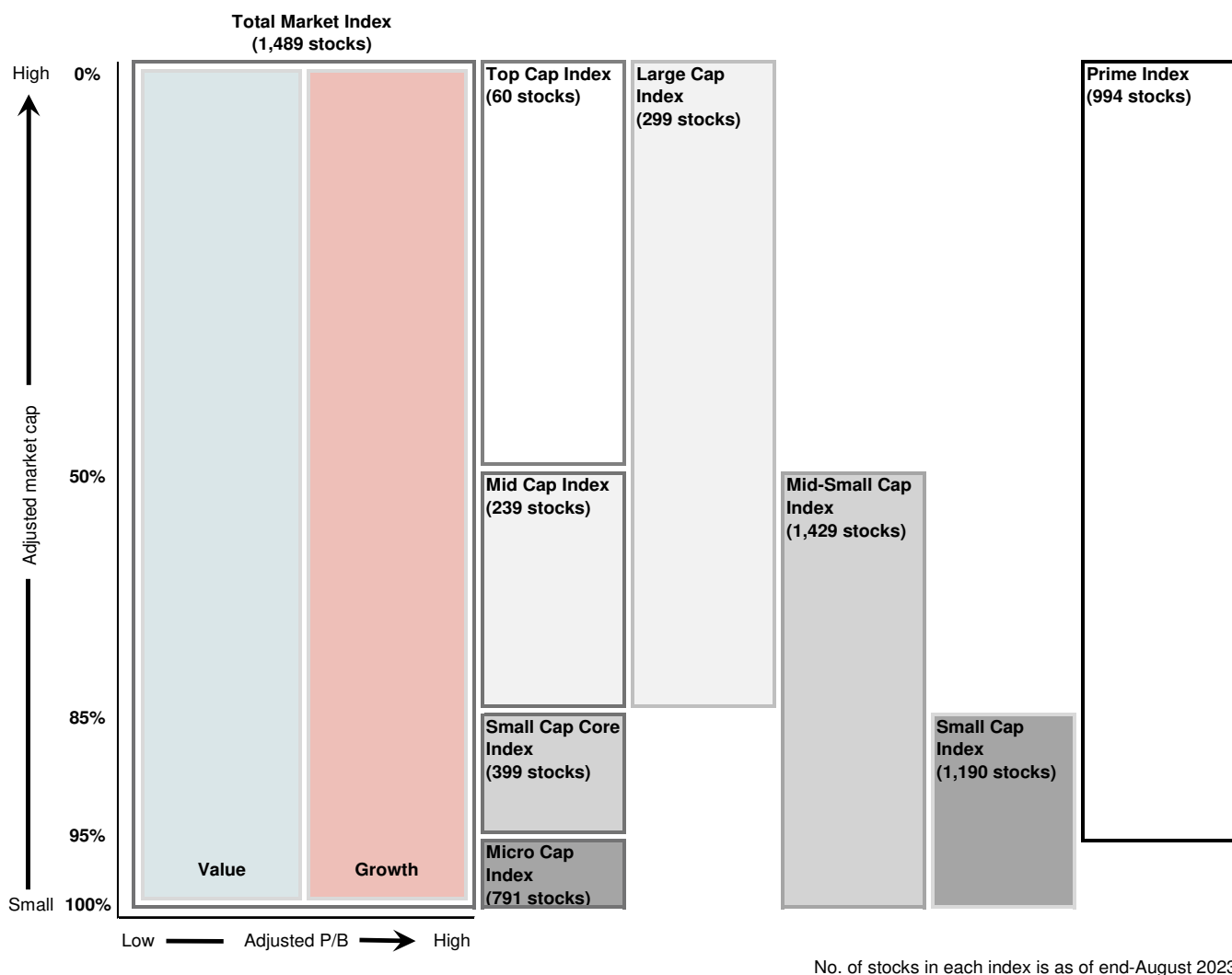
As of end-August 2023

Index	P/E (x)	P/B (x)	Dividend yield (%)	ROE (%)	Rec profit growth (%)
Total Market	15.31	1.34	2.29	9.00	9.80
Value	11.83	0.92	2.91	7.97	13.56
Growth	22.09	2.56	1.64	12.02	2.95
Large	15.40	1.41	2.27	9.41	8.79
Large Value	11.73	0.96	2.93	8.39	12.72
Large Growth	22.07	2.56	1.64	12.07	2.13
Top	15.89	1.53	2.30	9.96	11.48
Top Value	12.26	1.05	2.93	8.82	19.94
Top Growth	21.38	2.55	1.76	12.40	0.53
Mid	14.69	1.24	2.22	8.71	5.32
Mid Value	11.07	0.86	2.93	7.93	5.33
Mid Growth	23.44	2.59	1.41	11.48	5.29
Mid-Small	14.71	1.17	2.27	8.19	8.24
Mid-Small Value	11.47	0.83	2.89	7.37	8.92
Mid-Small Growth	23.13	2.56	1.47	11.52	6.48
Small	14.76	1.04	2.39	7.19	15.71
Small Value	12.34	0.77	2.83	6.40	17.76
Small Growth	22.25	2.49	1.64	11.63	9.87
Small Core	14.99	1.10	2.38	7.50	21.53
Small Core Value	12.28	0.80	2.84	6.67	25.69
Small Core Growth	22.66	2.53	1.67	11.57	11.21
Micro	14.26	0.92	2.43	6.60	5.24
Micro Value	12.45	0.72	2.82	5.92	4.91
Micro Growth	21.15	2.39	1.57	11.78	6.50
Prime	15.34	1.35	2.29	9.07	10.01
Prime Value	11.84	0.93	2.91	8.04	13.99
Prime Growth	22.10	2.56	1.64	12.03	2.91

Note: All financial data are based on current-FY forecasts (with preference given to consolidated figures).

Source: NFRC

Fig. 9: Russell/Nomura Japan Equity Indexes



No. of stocks in each index is as of end-August 2023

Source: NFRC

All the indexes (Total Market, the capitalization indexes, Value, Growth, and Prime) also have indexes based on the 33 industrial sectors.

Divisions based on market cap exclude the value of stable shareholdings.

Value and Growth indexes are defined in terms of P/B ratios adjusted for unrealized gains/losses.

For composition rules and other information, please refer to Russell/Nomura Japan Equity Indexes rulebook.

Fig. 10: Russell/Nomura Japan Equity Indexes performance summary

As of end-August 2023

Price return (excluding dividends), US dollar basis

(Index)	No of stocks	Weight (%)	Index value	Returns (%) *				
				1 month	3 month	6 month	12 month	YTD
Total Market	1489	100.00	869.07	-2.30	4.59	9.66	12.86	11.73
Value	1095	51.18	1775.86	-1.15	10.64	13.04	20.40	16.47
Growth	767	48.82	376.18	-3.48	-1.08	6.32	6.04	7.16
Large	299	85.54	834.49	-2.52	4.37	10.25	13.35	12.53
Large Value	201	42.04	1651.85	-1.40	10.98	13.79	21.13	17.33
Large Growth	186	43.49	392.62	-3.59	-1.32	7.02	6.85	8.25
Top	60	52.28	675.29	-3.35	3.74	10.69	14.36	13.01
Top Value	38	24.30	1560.71	-2.46	11.46	16.21	25.09	18.89
Top Growth	44	27.98	323.88	-4.11	-2.15	6.30	6.47	8.36
Mid	239	33.25	1160.73	-1.20	5.37	9.56	11.80	11.79
Mid Value	163	17.74	1617.60	0.09	10.33	10.65	16.07	15.26
Mid Growth	142	15.51	590.29	-2.63	0.22	8.34	7.55	8.06
Mid-Small	1429	47.72	1136.19	-1.12	5.54	8.55	11.27	10.37
Mid-Small Value	1057	26.88	1788.49	0.07	9.90	10.33	16.46	14.37
Mid-Small Growth	723	20.84	511.80	-2.61	0.39	6.35	5.48	5.60
Small	1190	14.46	1068.56	-0.94	5.92	6.32	10.07	7.24
Small Value	894	9.13	1972.08	0.03	9.08	9.70	17.13	12.68
Small Growth	581	5.33	386.96	-2.57	0.91	0.98	-0.17	-0.96
Small Core	399	10.00	180.89	-1.08	5.81	7.32	10.34	7.85
Small Core Value	284	6.05	258.41	-0.08	9.25	10.99	17.88	13.70
Small Core Growth	216	3.95	71.29	-2.59	0.94	2.15	0.54	-0.04
Micro	791	4.46	212.65	-0.63	6.16	4.14	9.46	5.88
Micro Value	610	3.08	281.12	0.25	8.75	7.27	15.68	10.71
Micro Growth	365	1.38	77.14	-2.52	0.81	-2.21	-2.14	-3.46
Prime	994	97.98	1411.91	-2.32	4.55	9.77	12.89	11.83
Prime Value	714	49.76	1719.95	-1.18	10.67	13.19	20.48	16.59
Prime Growth	539	48.23	1070.71	-3.47	-1.09	6.44	6.13	7.31

Note: * Returns are not annualized.

Source: NFRC

Fig. 11: Russell/Nomura Japan Equity Indexes performance summary

As of end-August 2023

Total return (including dividends), US dollar basis

Index	No. of stocks	Weight (%)	Index value	Returns (%) *				
				1 month	3 months	6 months	12 months	YTD
Total Market	1489	100.00	1628.30	-2.27	4.75	11.17	15.88	13.31
Value	1095	51.18	3659.15	-1.13	10.82	15.12	24.65	18.66
Growth	767	48.82	641.36	-3.44	-0.94	7.32	7.98	8.21
Large	299	85.54	1570.35	-2.50	4.52	11.75	16.39	14.10
Large Value	201	42.04	3435.07	-1.39	11.16	15.90	25.50	19.55
Large Growth	186	43.49	674.45	-3.56	-1.18	8.03	8.82	9.30
Top	60	52.28	1312.26	-3.34	3.86	12.16	17.32	14.53
Top Value	38	24.30	3335.85	-2.45	11.61	18.23	29.31	20.98
Top Growth	44	27.98	580.86	-4.09	-2.04	7.39	8.54	9.48
Mid	239	33.25	2095.03	-1.16	5.58	11.11	14.97	13.44
Mid Value	163	17.74	3234.27	0.11	10.56	12.86	20.61	17.64
Mid Growth	142	15.51	955.28	-2.58	0.40	9.20	9.32	8.99
Mid-Small	1429	47.72	2062.21	-1.08	5.74	10.10	14.36	12.02
Mid-Small Value	1057	26.88	3564.03	0.10	10.12	12.45	20.72	16.64
Mid-Small Growth	723	20.84	828.16	-2.56	0.58	7.24	7.23	6.56
Small	1190	14.46	1969.69	-0.89	6.12	7.86	12.97	8.90
Small Value	894	9.13	3910.37	0.08	9.28	11.65	20.87	14.76
Small Growth	581	5.33	626.54	-2.50	1.12	1.94	1.52	0.11
Small Core	399	10.00	270.36	-1.03	6.01	8.84	13.15	9.47
Small Core Value	284	6.05	404.89	-0.03	9.45	12.92	21.55	15.76
Small Core Growth	216	3.95	97.85	-2.53	1.13	3.13	2.22	1.02
Micro	791	4.46	324.67	-0.56	6.38	5.74	12.57	7.64
Micro Value	610	3.08	452.36	0.30	8.95	9.24	19.55	12.85
Micro Growth	365	1.38	103.72	-2.43	1.08	-1.29	-0.45	-2.38
Prime	994	97.98	2209.75	-2.30	4.71	11.27	15.91	13.41
Prime Value	714	49.76	2903.89	-1.16	10.85	15.27	24.74	18.77
Prime Growth	539	48.23	1557.49	-3.44	-0.95	7.45	8.08	8.36

Note: * Returns are not annualized.

Source: NFRC

Data publication services

Data for the Russell/Nomura Japan Equity Indexes can be obtained via the following channels.³⁾

Index values are published in the following media:

- Bloomberg (RNJI)
- Jiji (RNSI/12400, RNSIIDV/12400)
- QUICK (NRIJ500–503, 510–517)
- Refinitiv (FRCNRI01, FRCNRI02, FRCNRI03, FRCNRI04, .JRNP, .JRNS)
- Website (<http://qr.nomuraholdings.com/en/frcnri/index.html>)

Daily index values are published in the following media:

Russell/Nomura Prime Index:

- Bloomberg (RNPJ <Index>)
- Jiji (RNP/NOMURA)
- QUICK (140)

More detailed data:

More detailed data on index values and individual stock information can be obtained through Nomura Research Institute services Aurora, e-Aurora, and IDS.

For information, contact:

Nomura Research Institute

Investment Information Systems Business Department

e-mail: ids-sales@nri.co.jp

Other reports:

Russell/Nomura Japan Equity Indexes rulebook

Russell/Nomura Japan Equity Indexes handbook

Contact:

Nomura Fiduciary Research & Consulting Co., Ltd.

e-mail: idx_mgr@nfrco.co.jp

3. Published data are all for reference only.

Disclaimer

The intellectual property rights and any other rights in Russell/Nomura Japan Equity Index belong to Nomura Fiduciary Research & Consulting Co., Ltd. ("NFRC") and Frank Russell Company ("Russell"). NFRC and Russell do not guarantee accuracy, completeness, reliability, usefulness, marketability, merchantability and fitness of the Index, and do not account for business activities or services that any index user and/or its affiliates undertakes with the use of the Index.

Publication of the index could be delayed or canceled if a computer malfunction, natural disaster, or other unavoidable event affects the index calculation process.

Please read "About The Index License" before using the indexes, regardless of the channel through which indexes/data is acquired (NFRC website, services via information vendors, etc).

"About The Index License"

<http://qr.nomuraholdings.com/en/indexlicense.html>

- This material has been prepared by NFRC for information purposes only.
- All opinions and/or predictions contained in this material are based on the determination of NFRC at the time this material was prepared and are subject to change without notice. We do not provide any guarantee or assurance that opinions contained in this material relating to future predictions will actually take place. Some part of the content of this material is based on various information available to NFRC which NFRC determined to be reliable. However, NFRC does not guarantee the accuracy of such information, and there is a possibility that such information was summarized and imperfect. The past investment performance is not indicative of the future results.
- This material is not intended as an investment solicitation or an investment advice in connection with any particular security transaction.
- If a customer invests in an investment product that uses a market benchmark developed and provided by NFRC, a portion of the fees for the use of such benchmark may be directly or indirectly attributed to NFRC. For details, please visit the following website.
Securities Market Benchmarks <http://qr.nomuraholdings.com/en/>
- This material may only be used by the customer to whom it was distributed. This material is the copyrighted work of NFRC and you may not copy, transmit or redistribute this material, in whole or in part, without the prior written consent of NFRC.

Nomura Fiduciary Research & Consulting Co., Ltd.

Registration Number: Director-General of the Kanto Local Financial Bureau (Finance & Commerce) Registration No.451

Membership: Japan Investment Advisers Association No. 011-00961