

Russell/Nomura Japan Equity Indexes

EQUITY: INDEX SERVICES DEPARTMENT

Performance summary

Research Analysts

[Japan index products](#)

Index Services Department - NFRC

idx_mgr@nfrc.co.jp



Fig. 1: Russell/Nomura Japan Equity Indexes performance summary

As of end-November 2024

Total return (including dividends)

(Index)	No of stocks	Weight (%)	Index value	Returns (%) *				
				1-month	3 month	6 month	12 month	YTD
Total Market	1300	100.00	1180.76	-0.50	-0.07	-1.75	16.11	16.19
Value	996	50.86	2762.02	0.60	1.58	-3.27	19.75	21.40
Growth	658	49.14	447.81	-1.45	-1.50	-0.20	12.97	11.76
Large	250	84.44	1144.14	-0.68	-0.38	-2.32	16.47	16.74
Large Value	175	40.86	2604.40	0.52	1.42	-3.98	20.22	22.37
Large Growth	156	43.57	474.74	-1.63	-1.81	-0.77	13.50	12.37
Top	50	52.31	987.01	-0.25	0.10	-3.03	19.53	19.63
Top Value	32	21.70	2617.45	1.32	3.10	-4.79	24.60	28.23
Top Growth	39	30.61	424.54	-1.16	-1.68	-1.76	16.53	14.69
Mid	200	32.12	1458.32	-1.25	-1.01	-1.22	12.41	12.90
Mid Value	143	19.16	2365.64	-0.18	-0.13	-3.04	16.20	17.08
Mid Growth	117	12.96	626.83	-2.53	-2.06	1.28	8.01	8.08
Mid-Small	1250	47.69	1439.77	-0.74	-0.22	-0.35	12.82	12.88
Mid-Small Value	964	29.16	2613.16	0.14	0.57	-2.12	16.59	17.04
Mid-Small Growth	619	18.53	542.58	-1.84	-1.20	2.27	8.15	7.74
Small	1050	15.56	1385.89	0.46	1.75	1.83	13.74	12.65
Small Value	821	10.00	2886.69	0.81	2.17	0.05	17.43	16.90
Small Growth	502	5.56	407.49	-0.04	1.12	5.02	8.19	6.33
Small Core	350	10.69	450.24	0.53	2.61	2.70	15.07	14.09
Small Core Value	260	6.70	706.75	0.72	2.75	-0.07	18.60	18.25
Small Core Growth	182	3.99	152.21	0.41	2.56	7.26	10.39	8.62
Micro	700	4.88	530.03	0.30	0.07	0.12	11.18	9.90
Micro Value	561	3.30	777.54	1.00	1.22	0.26	15.49	14.67
Micro Growth	320	1.57	151.94	-1.18	-2.32	-0.17	3.05	1.03
Prime	1000	98.71	3315.59	-0.50	-0.06	-1.74	16.17	16.28
Prime Value	754	49.93	4534.39	0.62	1.63	-3.29	19.83	21.56
Prime Growth	528	48.78	2252.03	-1.45	-1.50	-0.19	13.06	11.87

Note: * Returns are not annualized.

Source: Nomura Fiduciary Research & Consulting Co., Ltd. (NFRC)

For composition rules, please refer to Russell/Nomura Japan Equity Indexes rulebook.

Fig. 2: Russell/Nomura Japan Equity Indexes performance summary

As of end-November 2024

Price return (excluding dividends)

(Index)	No of stocks	Weight (%)	Index value	Returns (%) *				
				1 month	3 month	6 month	12 month	YTD
Total Market	1300	100.00	610.27	-0.53	-1.03	-2.83	13.48	13.73
Value	996	50.86	1286.67	0.55	0.27	-4.66	16.31	18.08
Growth	658	49.14	256.54	-1.46	-2.15	-0.99	11.04	10.02
Large	250	84.44	588.97	-0.71	-1.34	-3.39	13.88	14.32
Large Value	175	40.86	1202.11	0.47	0.08	-5.38	16.78	19.04
Large Growth	156	43.57	269.92	-1.64	-2.46	-1.56	11.58	10.64
Top	50	52.31	492.12	-0.27	-0.91	-4.09	16.96	17.16
Top Value	32	21.70	1174.57	1.27	1.62	-6.24	21.02	24.65
Top Growth	39	30.61	231.00	-1.17	-2.41	-2.56	14.56	12.86
Mid	200	32.12	782.50	-1.28	-1.89	-2.31	9.79	10.53
Mid Value	143	19.16	1136.69	-0.22	-1.32	-4.39	12.90	13.98
Mid Growth	117	12.96	378.90	-2.55	-2.57	0.51	6.19	6.56
Mid-Small	1250	47.69	767.74	-0.77	-1.12	-1.46	10.13	10.42
Mid-Small Value	964	29.16	1259.54	0.09	-0.62	-3.46	13.24	13.89
Mid-Small Growth	619	18.53	327.89	-1.86	-1.73	1.49	6.28	6.14
Small	1050	15.56	726.40	0.42	0.79	0.68	10.85	9.97
Small Value	821	10.00	1397.50	0.76	0.99	-1.29	13.96	13.64
Small Growth	502	5.56	245.82	-0.07	0.55	4.21	6.18	4.53
Small Core	350	10.69	291.18	0.49	1.64	1.56	12.21	11.42
Small Core Value	260	6.70	433.15	0.67	1.55	-1.41	15.16	15.00
Small Core Growth	182	3.99	108.28	0.38	1.93	6.41	8.34	6.75
Micro	700	4.88	335.12	0.24	-0.86	-1.02	8.24	7.20
Micro Value	561	3.30	463.60	0.93	0.06	-1.09	11.98	11.38
Micro Growth	320	1.57	110.52	-1.21	-2.77	-0.90	1.15	-0.63
Prime	1000	98.71	2051.61	-0.53	-1.01	-2.82	13.55	13.83
Prime Value	754	49.93	2578.03	0.58	0.32	-4.68	16.40	18.25
Prime Growth	528	48.78	1512.10	-1.47	-2.15	-0.98	11.13	10.14

Note: * Returns are not annualized.

Source: NFRC

Fig. 3: Russell/Nomura Japan Equity Indexes performance summary

As of end-November 2024

Total return (including dividends)

Index	No. of stocks	Weight (%)	Index value	Returns (%) *				
				1 month	3 months	6 months	12 months	YTD
Total Market	1300	100.00	1180.76	-0.50	-0.07	-1.75	16.11	16.19
Value	996	50.86	2762.02	0.60	1.58	-3.27	19.75	21.40
Growth	658	49.14	447.81	-1.45	-1.50	-0.20	12.97	11.76
Large	250	84.44	1144.14	-0.68	-0.38	-2.32	16.47	16.74
Large Value	175	40.86	2604.40	0.52	1.42	-3.98	20.22	22.37
Large Growth	156	43.57	474.74	-1.63	-1.81	-0.77	13.50	12.37
Top	50	52.31	987.01	-0.25	0.10	-3.03	19.53	19.63
Top Value	32	21.70	2617.45	1.32	3.10	-4.79	24.60	28.23
Top Growth	39	30.61	424.54	-1.16	-1.68	-1.76	16.53	14.69
Mid	200	32.12	1458.32	-1.25	-1.01	-1.22	12.41	12.90
Mid Value	143	19.16	2365.64	-0.18	-0.13	-3.04	16.20	17.08
Mid Growth	117	12.96	626.83	-2.53	-2.06	1.28	8.01	8.08
Mid-Small	1250	47.69	1439.77	-0.74	-0.22	-0.35	12.82	12.88
Mid-Small Value	964	29.16	2613.16	0.14	0.57	-2.12	16.59	17.04
Mid-Small Growth	619	18.53	542.58	-1.84	-1.20	2.27	8.15	7.74
Small	1050	15.56	1385.89	0.46	1.75	1.83	13.74	12.65
Small Value	821	10.00	2886.69	0.81	2.17	0.05	17.43	16.90
Small Growth	502	5.56	407.49	-0.04	1.12	5.02	8.19	6.33
Small Core	350	10.69	450.24	0.53	2.61	2.70	15.07	14.09
Small Core Value	260	6.70	706.75	0.72	2.75	-0.07	18.60	18.25
Small Core Growth	182	3.99	152.21	0.41	2.56	7.26	10.39	8.62
Micro	700	4.88	530.03	0.30	0.07	0.12	11.18	9.90
Micro Value	561	3.30	777.54	1.00	1.22	0.26	15.49	14.67
Micro Growth	320	1.57	151.94	-1.18	-2.32	-0.17	3.05	1.03
Prime	1000	98.71	3315.59	-0.50	-0.06	-1.74	16.17	16.28
Prime Value	754	49.93	4534.39	0.62	1.63	-3.29	19.83	21.56
Prime Growth	528	48.78	2252.03	-1.45	-1.50	-0.19	13.06	11.87

Note: * Returns are not annualized.

Source: NFRC

Fig. 4: Russell/Nomura index data by industrial sector

As of end-November 2024

Number of stocks and weighting

Index	Total Market		Value		Growth		Small		Prime	
	No of stocks	(%)	No of stocks	(%)	No of stocks	(%)	No of stocks	(%)	No of stocks	(%)
Overall	1300	100.00	996	100.00	658	100.00	1050	100.00	1000	100.00
Fishery, agriculture & forestry	5	0.08	5	0.15	0	0.00	5	0.50	4	0.07
Mining	5	0.29	5	0.57	1	0.01	4	0.25	3	0.29
Construction	61	2.19	57	3.85	26	0.48	54	5.29	45	2.14
Foods	54	3.17	47	2.53	26	3.84	44	5.41	41	3.16
Textiles and apparel	17	0.39	16	0.69	5	0.09	16	1.32	13	0.38
Pulp and paper	7	0.14	7	0.27	0	0.00	7	0.89	6	0.14
Chemicals	96	5.52	82	4.63	42	6.43	77	7.67	75	5.49
Pharmaceuticals	33	4.62	26	3.09	24	6.21	22	2.21	29	4.67
Oil and coal products	4	0.55	4	1.09	0	0.00	1	0.05	4	0.56
Rubber products	10	0.59	10	1.16	1	0.00	9	1.08	9	0.59
Glass and ceramics products	22	0.71	20	1.00	9	0.41	18	2.16	17	0.69
Iron & steel	20	0.79	20	1.55	0	0.00	17	1.05	10	0.75
Nonferrous metals	16	0.88	14	1.30	4	0.45	13	1.85	15	0.89
Metal products	20	0.47	19	0.65	7	0.29	17	1.43	14	0.46
Machinery	93	5.57	79	3.59	45	7.62	79	7.59	69	5.53
Electric appliances	110	18.40	86	6.81	70	30.40	77	7.79	91	18.56
Transportation equipment	39	5.81	38	10.79	3	0.66	26	2.00	34	5.87
Precision equipments	24	2.50	15	0.39	17	4.67	18	1.67	20	2.52
Other products	30	2.60	21	0.96	20	4.31	24	2.02	26	2.62
Electricity and gas	21	1.26	20	2.46	2	0.01	14	1.54	17	1.26
Land transportation	35	2.24	32	3.86	13	0.56	22	3.30	33	2.26
Marine transportation	5	0.76	5	1.50	0	0.00	2	0.10	5	0.77
Airlines	2	0.34	2	0.62	1	0.05	0	0.00	2	0.35
Warehousing & harbor transportation services	7	0.14	7	0.26	1	0.01	7	0.89	5	0.13
Information and communications	114	8.03	38	6.05	98	10.08	94	8.90	83	8.00
Wholesale trade	95	6.47	87	9.01	40	3.84	84	6.23	63	6.41
Retail trade	118	4.39	66	2.51	83	6.33	105	9.42	86	4.31
Banks	64	8.64	63	16.83	3	0.17	52	5.90	52	8.69
Securities & commodity futures	19	0.89	15	1.63	9	0.13	16	1.01	12	0.87
Insurance	8	3.38	8	3.87	4	2.88	2	0.16	8	3.43
Other financing business	19	1.27	16	1.89	5	0.64	15	1.58	17	1.28
Real estate	40	1.81	30	2.80	24	0.79	33	2.93	27	1.78
Services	87	5.08	36	1.63	75	8.65	76	5.80	65	5.06

Source: NFRC

Fig. 5: Russell/Nomura index data by industrial sector

As of end-November 2024

Monthly return*

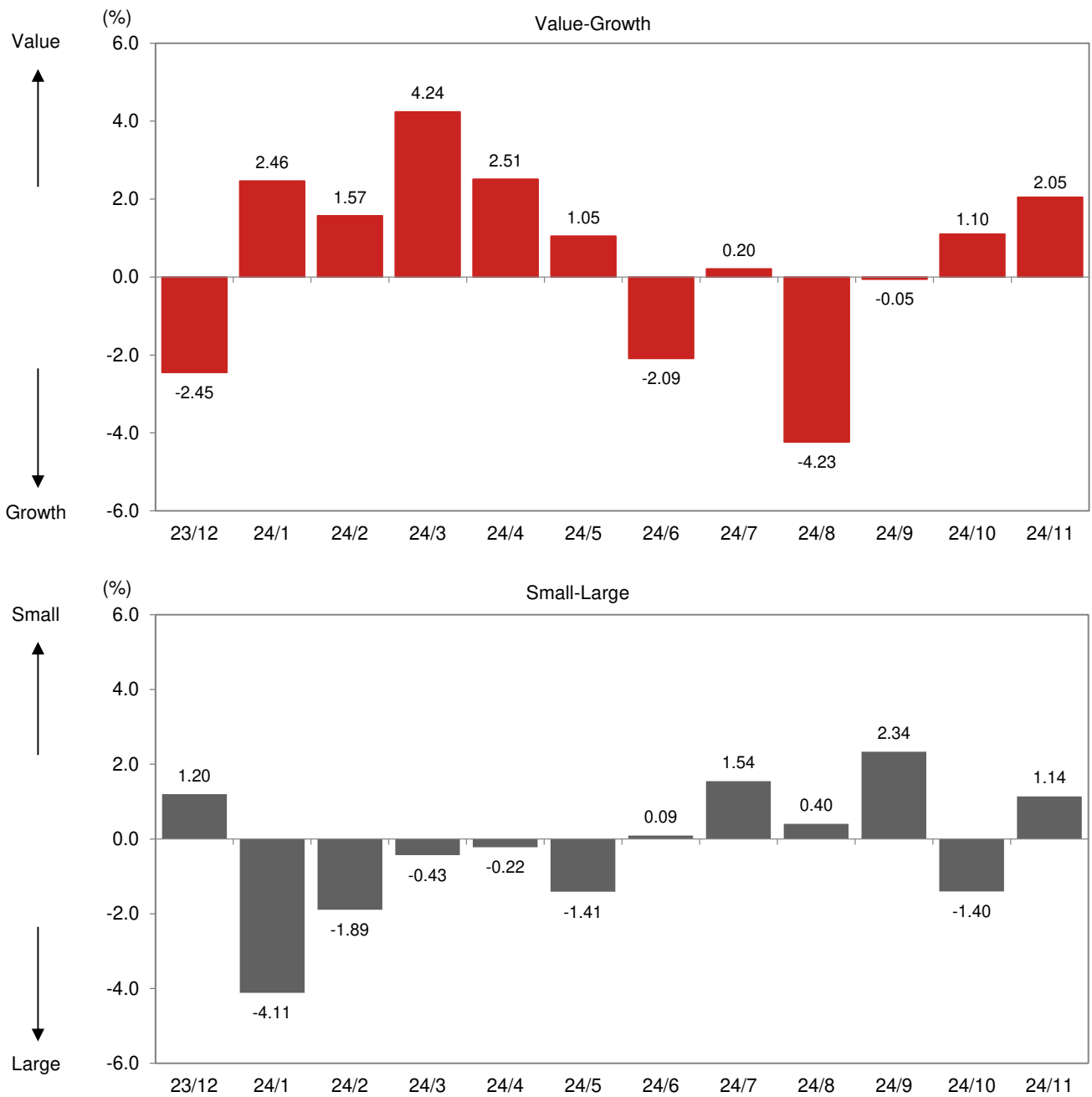
Index	Total Market		Value		Growth		Small		Prime	
	dividends	dividends	dividends	dividends	dividends	dividends	dividends	dividends	dividends	dividends
Total	-0.53	-0.50	0.55	0.60	-1.46	-1.45	0.42	0.46	-0.53	-0.50
Fishery, agriculture & forestry	-1.17	-1.01	-1.04	-0.88	-	-	-1.17	-1.01	-0.87	-0.70
Mining	-2.37	-2.42	-2.28	-2.32	-11.05	-11.05	-5.31	-5.63	-2.32	-2.37
Construction	2.23	2.26	2.37	2.40	0.95	0.95	2.04	2.05	2.24	2.26
Foods	-2.01	-1.99	-4.06	-4.05	-0.91	-0.90	0.62	0.67	-2.04	-2.02
Textiles & apparel	8.12	8.22	8.07	8.19	8.78	8.78	3.56	3.76	8.30	8.42
Pulp & paper	-3.13	-3.13	-3.13	-3.13	-	-	-3.04	-3.04	-3.00	-3.00
Chemicals	-4.88	-4.87	-2.30	-2.27	-6.45	-6.45	-1.57	-1.52	-4.96	-4.95
Pharmaceuticals	-6.48	-6.48	-4.26	-4.25	-7.26	-7.26	0.56	0.58	-6.49	-6.49
Oil & coal products	-0.43	-0.22	-0.43	-0.22	-	-	-1.11	-1.11	-0.43	-0.22
Rubber products	-1.58	-1.58	-1.43	-1.42	-2.13	-2.13	3.61	3.62	-1.52	-1.52
Glass & ceramic products	-0.46	-0.45	0.46	0.47	-3.23	-3.22	-2.58	-2.58	-0.20	-0.19
Iron & steel	-2.18	-2.06	-2.15	-2.03	-	-	0.06	0.10	-2.48	-2.37
Nonferrous metals	3.92	3.94	5.54	5.57	-8.54	-8.54	3.51	3.57	4.01	4.03
Metal products	-1.83	-1.78	-5.87	-5.86	9.46	9.62	-1.77	-1.75	-1.93	-1.87
Machinery	-2.32	-2.30	0.23	0.28	-3.62	-3.61	-1.08	-0.99	-2.22	-2.20
Electric appliances	-2.16	-2.15	-0.03	-0.02	-2.82	-2.81	-2.31	-2.29	-2.16	-2.15
Transportation equipment	-6.44	-6.35	-7.18	-7.14	-2.85	-1.80	0.54	0.64	-6.47	-6.37
Precision equipment	-5.48	-5.50	-3.90	-3.90	-5.61	-5.63	-6.22	-6.21	-5.45	-5.46
Other products	2.95	2.86	-8.76	-8.74	5.95	5.84	-0.86	-0.80	3.06	2.97
Electric power & gas	-7.62	-7.62	-7.66	-7.66	-1.06	-1.06	-9.39	-9.39	-7.67	-7.67
Land transportation	-0.67	-0.64	-0.65	-0.63	-2.43	-2.34	1.38	1.42	-0.67	-0.65
Marine transportation	-4.92	-4.86	-4.92	-4.86	-	-	1.74	1.74	-4.97	-4.92
Air transportation	-1.53	-1.53	-0.91	-0.91	-2.72	-2.72	-	-	-1.51	-1.51
Warehousing & harbor transportation services	5.24	5.25	5.42	5.42	-0.97	-0.97	5.24	5.25	5.60	5.60
Information & communication	1.21	1.22	-4.53	-4.53	3.11	3.12	3.58	3.59	1.16	1.16
Wholesale trade	-3.84	-3.84	-4.43	-4.43	-2.54	-2.53	-1.86	-1.81	-3.91	-3.90
Retail trade	4.30	4.34	7.89	7.93	2.98	3.02	1.13	1.21	4.43	4.47
Banks	12.16	12.24	12.07	12.15	19.27	19.27	8.81	8.93	12.21	12.28
Securities & commodity futures	9.01	9.73	8.29	9.04	18.52	18.84	11.80	11.92	9.13	9.87
Insurance	3.84	3.85	7.36	7.36	-0.29	-0.27	-0.61	-0.61	3.84	3.86
Other financing business	1.29	1.47	1.85	2.09	-0.39	-0.39	0.52	0.52	1.29	1.47
Real estate	-3.17	-3.14	-3.37	-3.34	-2.67	-2.65	-1.16	-1.09	-3.37	-3.34
Services	2.49	2.49	0.86	0.86	2.76	2.76	-1.50	-1.50	2.56	2.56

Note: * Returns are not annualized.

Source: NFRC

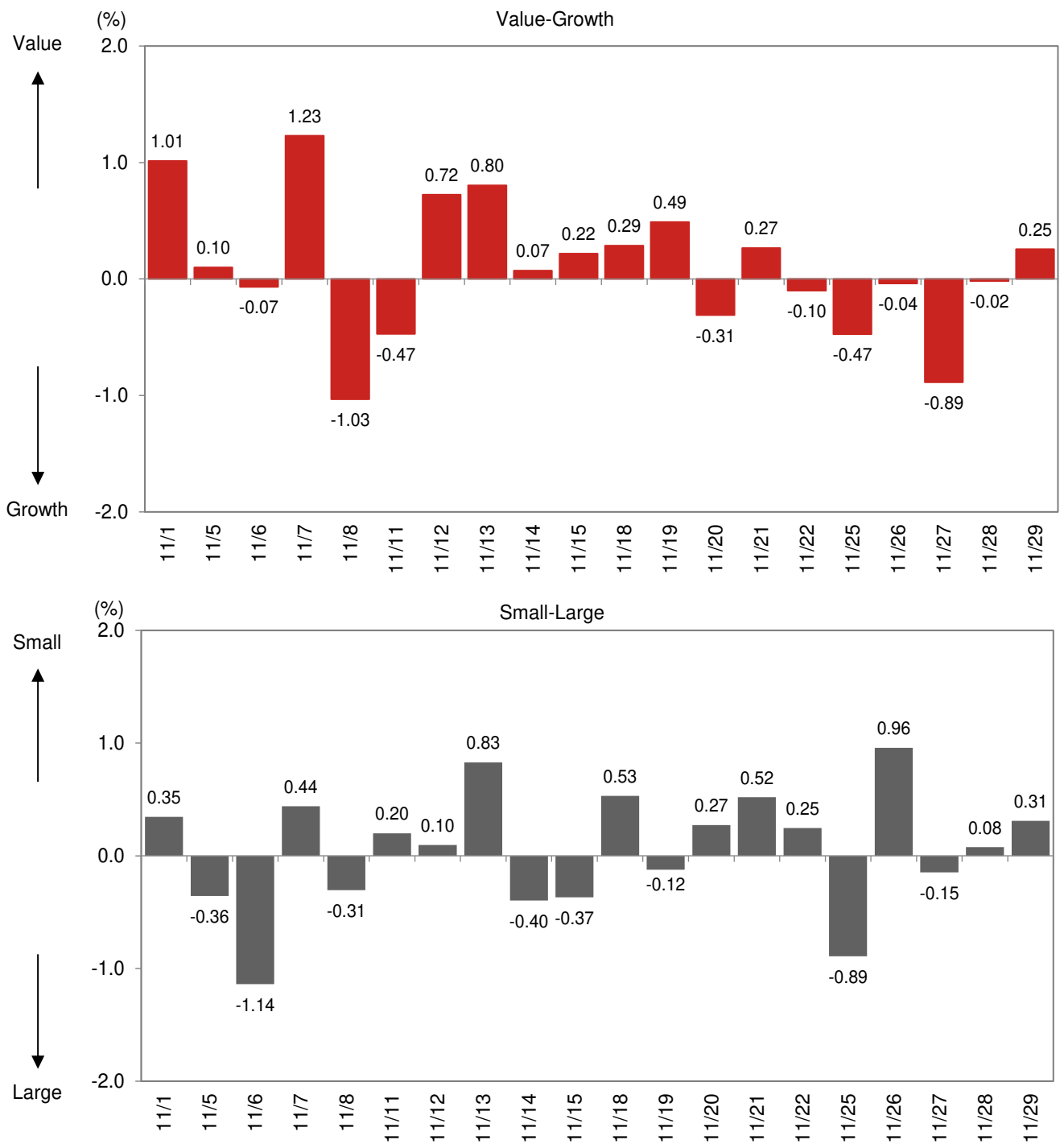
Fig. 6: Monthly performance

Total return



Note: Value-Growth is the difference between Value and Growth returns. Small-Large is the difference between Small and Large returns. Returns are not annualized.
Source: NFRC

Fig. 7: Daily performance



Note: Value-Growth is the difference between Value and Growth returns. Small-Large is the difference between Small and Large returns. Returns are not annualized.
Source: NFRG

Fig. 8: Russell/Nomura Japan Equity Indexes key indicators

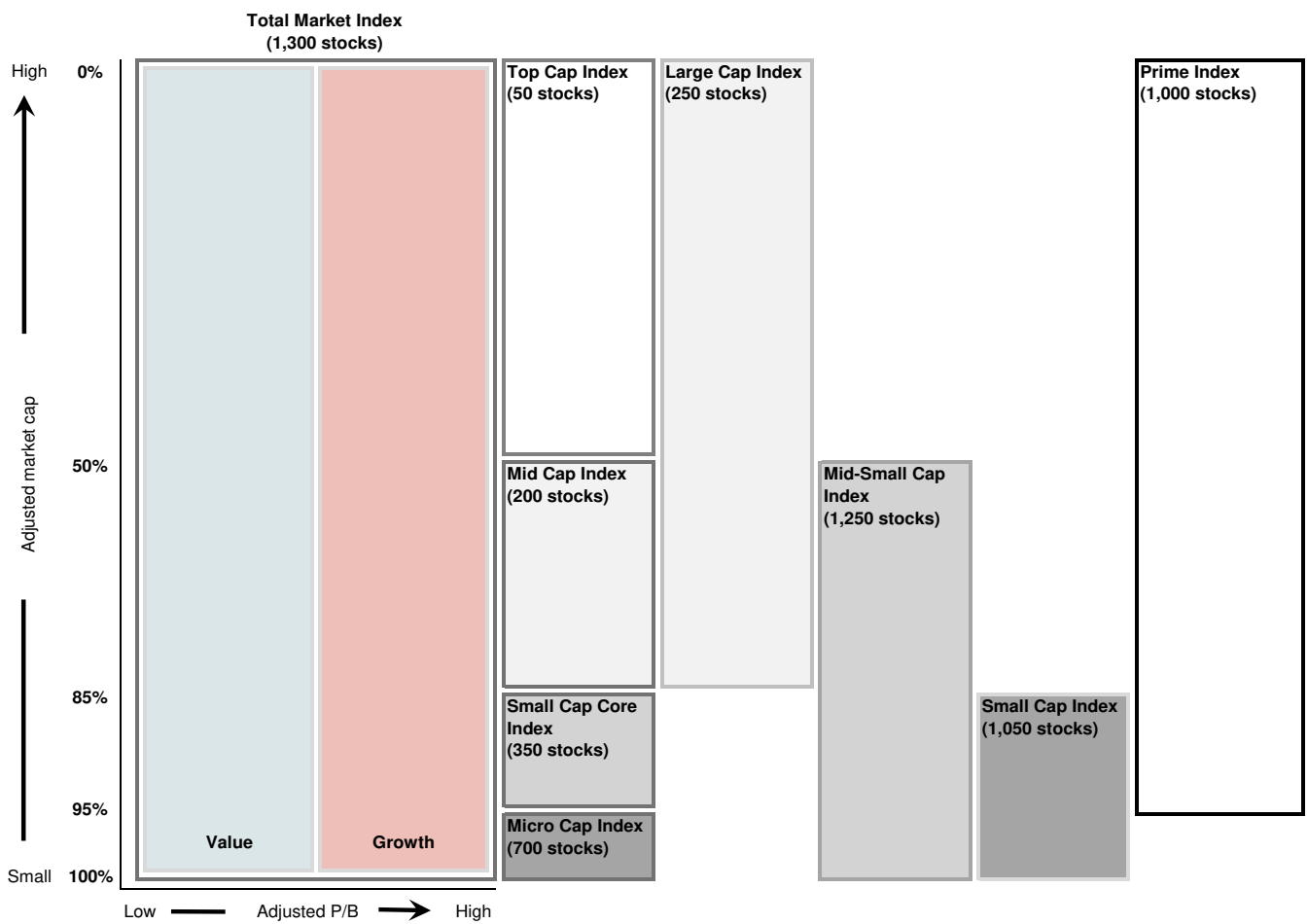
As of end-November 2024

Index	P/E (x)	P/B (x)	Dividend yield (%)	ROE (%)	Rec profit growth (%)
Total Market	15.56	1.35	2.40	8.91	9.42
Value	11.89	0.90	3.15	7.76	5.37
Growth	22.84	2.76	1.63	12.61	18.76
Large	15.88	1.42	2.35	9.23	9.78
Large Value	11.86	0.93	3.15	8.07	5.62
Large Growth	23.30	2.80	1.60	12.54	18.77
Top	16.44	1.67	2.21	10.54	13.80
Top Value	11.56	1.04	3.13	9.28	12.61
Top Growth	23.47	2.95	1.56	13.12	15.57
Mid	15.06	1.14	2.58	7.78	4.80
Mid Value	12.22	0.83	3.18	6.99	-0.93
Mid Growth	22.90	2.52	1.69	11.38	26.43
Mid-Small	14.69	1.11	2.61	7.73	5.73
Mid-Small Value	12.16	0.82	3.16	6.88	0.72
Mid-Small Growth	21.88	2.51	1.74	11.91	23.77
Small	14.00	1.04	2.67	7.64	7.71
Small Value	12.03	0.79	3.14	6.69	4.33
Small Growth	19.80	2.49	1.85	13.14	18.71
Small Core	14.38	1.10	2.60	7.82	7.60
Small Core Value	12.27	0.82	3.07	6.83	4.73
Small Core Growth	20.24	2.52	1.80	13.01	16.12
Micro	13.22	0.94	2.84	7.29	7.92
Micro Value	11.59	0.73	3.27	6.42	3.59
Micro Growth	18.77	2.42	1.95	13.46	25.33
Prime	15.61	1.36	2.39	8.95	9.52
Prime Value	11.91	0.90	3.14	7.80	5.43
Prime Growth	22.88	2.77	1.63	12.60	18.84

Note: All financial data are based on current-FY forecasts (with preference given to consolidated figures).

Source: NFRC

Fig. 9: Russell/Nomura Japan Equity Indexes



No. of stocks in each index is as of end-November 2024

Source: NFRC

All the indexes (Total Market, the capitalization indexes, Value and Growth indexes, and Prime) also have indexes based on the 33 industrial sectors.

Divisions based on market cap exclude the value of stable shareholdings.

Value and Growth indexes are defined in terms of P/B ratios adjusted for unrealized gains/losses.

Fig. 10: Russell/Nomura Japan Equity Indexes performance summary

As of end-November 2024

Price return (excluding dividends), US dollar basis

(Index)	No of stocks	Weight (%)	Index value	Returns (%) *				
				1 month	3 month	6 month	12 month	YTD
Total Market	1300	100.00	976.09	0.97	-4.36	1.81	11.26	7.21
Value	996	50.86	2057.94	2.07	-3.11	-0.11	14.04	11.32
Growth	658	49.14	410.32	0.02	-5.45	3.73	8.88	3.72
Large	250	84.44	942.02	0.79	-4.66	1.22	11.65	7.77
Large Value	175	40.86	1922.70	1.99	-3.29	-0.86	14.50	12.22
Large Growth	156	43.57	431.72	-0.16	-5.75	3.14	9.41	4.31
Top	50	52.31	787.12	1.23	-4.25	0.49	14.67	10.45
Top Value	32	21.70	1878.65	2.80	-1.81	-1.76	18.65	17.51
Top Growth	39	30.61	369.47	0.32	-5.70	2.08	12.32	6.40
Mid	200	32.12	1251.56	0.21	-5.20	2.35	7.65	4.20
Mid Value	143	19.16	1818.06	1.28	-4.65	0.17	10.70	7.45
Mid Growth	117	12.96	606.03	-1.08	-5.85	5.31	4.12	0.45
Mid-Small	1250	47.69	1227.95	0.72	-4.45	3.24	7.98	4.09
Mid-Small Value	964	29.16	2014.55	1.60	-3.97	1.14	11.03	7.37
Mid-Small Growth	619	18.53	524.44	-0.38	-5.04	6.33	4.20	0.06
Small	1050	15.56	1161.84	1.93	-2.60	5.49	8.68	3.67
Small Value	821	10.00	2235.21	2.28	-2.41	3.42	11.74	7.13
Small Growth	502	5.56	393.18	1.43	-2.84	9.18	4.11	-1.46
Small Core	350	10.69	198.16	2.00	-1.79	6.40	10.02	5.04
Small Core Value	260	6.70	294.78	2.19	-1.87	3.30	12.91	8.41
Small Core Growth	182	3.99	73.69	1.90	-1.50	11.48	6.23	0.63
Micro	700	4.88	228.07	1.75	-4.20	3.70	6.13	1.06
Micro Value	561	3.30	315.50	2.45	-3.32	3.63	9.79	5.00
Micro Growth	320	1.57	75.22	0.28	-6.04	3.83	-0.83	-6.32
Prime	1000	98.71	1586.34	0.97	-4.35	1.81	11.33	7.31
Prime Value	754	49.93	1993.38	2.09	-3.06	-0.13	14.12	11.48
Prime Growth	528	48.78	1169.18	0.02	-5.45	3.74	8.96	3.83

Note: * Returns are not annualized.

Source: NFRC

Fig. 11: Russell/Nomura Japan Equity Indexes performance summary

As of end-November 2024

Total return (including dividends), US dollar basis

Index	No. of stocks	Weight (%)	Index value	Returns (%) *				
				1 month	3 months	6 months	12 months	YTD
Total Market	1300	100.00	1888.56	1.00	-3.44	2.94	13.84	9.53
Value	996	50.86	4417.68	2.12	-1.84	1.34	17.41	14.45
Growth	658	49.14	716.24	0.04	-4.82	4.56	10.76	5.36
Large	250	84.44	1829.99	0.82	-3.74	2.34	14.19	10.06
Large Value	175	40.86	4165.58	2.03	-2.00	0.60	17.87	15.36
Large Growth	156	43.57	759.31	-0.14	-5.12	3.97	11.28	5.93
Top	50	52.31	1578.67	1.26	-3.28	1.59	17.19	12.78
Top Value	32	21.70	4186.46	2.85	-0.37	-0.25	22.16	20.88
Top Growth	39	30.61	679.02	0.33	-4.99	2.93	14.25	8.13
Mid	200	32.12	2332.49	0.24	-4.35	3.49	10.21	6.44
Mid Value	143	19.16	3783.70	1.33	-3.49	1.58	13.93	10.37
Mid Growth	117	12.96	1002.57	-1.06	-5.36	6.11	5.90	1.89
Mid-Small	1250	47.69	2302.83	0.76	-3.58	4.41	10.62	6.41
Mid-Small Value	964	29.16	4179.59	1.65	-2.82	2.55	14.31	10.34
Mid-Small Growth	619	18.53	867.82	-0.36	-4.53	7.14	6.03	1.57
Small	1050	15.56	2216.65	1.97	-1.68	6.69	11.51	6.20
Small Value	821	10.00	4617.09	2.33	-1.27	4.82	15.14	10.21
Small Growth	502	5.56	651.75	1.46	-2.28	10.03	6.07	0.24
Small Core	350	10.69	306.41	2.04	-0.85	7.60	12.82	7.56
Small Core Value	260	6.70	480.98	2.23	-0.71	4.70	16.29	11.48
Small Core Growth	182	3.99	103.58	1.93	-0.89	12.37	8.23	2.40
Micro	700	4.88	360.71	1.81	-3.31	4.90	9.01	3.61
Micro Value	561	3.30	529.15	2.52	-2.19	5.04	13.23	8.10
Micro Growth	320	1.57	103.40	0.31	-5.62	4.59	1.03	-4.76
Prime	1000	98.71	2563.67	1.00	-3.43	2.94	13.90	9.62
Prime Value	754	49.93	3506.07	2.14	-1.79	1.32	17.49	14.60
Prime Growth	528	48.78	1741.31	0.03	-4.82	4.57	10.85	5.46

Note: * Returns are not annualized.

Source: NFRC

Data publication services

Data for the Russell/Nomura Japan Equity Indexes can be obtained via the following channels.^[1]

Index values are published in the following media:

- Bloomberg (RNJI)
- Jiji (RNSI/12400, RNSIIDV/12400)
- QUICK (NRIJ500–503, 510–517)
- Refinitiv (FRCNRI01, FRCNRI02, FRCNRI03, FRCNRI04, .JRNP, .JRNS)
- Website (<http://qr.nomuraholdings.com/en/frcnri/index.html>)

More detailed data:

More detailed data on index values and individual stock information can be obtained through Nomura Research Institute services Aurora, e-Aurora, and IDS. For information, contact:

Nomura Research Institute
Investment Information Systems Business Department
e-mail: ids-sales@nri.co.jp

Contact:

Nomura Fiduciary Research & Consulting Co., Ltd.
e-mail: idx_mgr@nfrco.co.jp

1. Published data are all for reference only.

Disclaimer

The intellectual property rights and any other rights in Russell/Nomura Japan Equity Index belong to Nomura Fiduciary Research & Consulting Co., Ltd. ("NFRC") and Frank Russell Company ("Russell"). NFRC and Russell do not guarantee accuracy, completeness, reliability, usefulness, marketability, merchantability and fitness of the Index, and do not account for business activities or services that any index user and/or its affiliates undertakes with the use of the Index.

Publication of the index could be delayed or canceled if a computer malfunction, natural disaster, or other unavoidable event affects the index calculation process.

Please read "About The Index License" before using the indexes, regardless of the channel through which indexes/data is acquired (NFRC website, services via information vendors, etc).

"About The Index License"

<http://qr.nomuraholdings.com/en/indexlicense.html>

- This material has been prepared by NFRC for information purposes only.
- All opinions and/or predictions contained in this material are based on the determination of NFRC at the time this material was prepared and are subject to change without notice. We do not provide any guarantee or assurance that opinions contained in this material relating to future predictions will actually take place. Some part of the content of this material is based on various information available to NFRC which NFRC determined to be reliable. However, NFRC does not guarantee the accuracy of such information, and there is a possibility that such information was summarized and imperfect. The past investment performance is not indicative of the future results.
- This material is not intended as an investment solicitation or an investment advice in connection with any particular security transaction.
- If a customer invests in an investment product that uses a market benchmark developed and provided by NFRC, a portion of the fees for the use of such benchmark may be directly or indirectly attributed to NFRC. For details, please visit the following website. Securities Market Benchmarks
<http://qr.nomuraholdings.com/en/>
- This material may only be used by the customer to whom it was distributed. This material is the copyrighted work of NFRC and you may not copy, transmit or redistribute this material, in whole or in part, without the prior written consent of NFRC.

Nomura Fiduciary Research & Consulting Co., Ltd.

Registration Number: Director-General of the Kanto Local Financial Bureau (Finance & Commerce) Registration No.451

Membership: Japan Investment Advisers Association No. 011-00961